



Web: [www.anbobio.com](http://www.anbobio.com)

[www.dijibio.com](http://www.dijibio.com)

Order: [order@dijibio.com](mailto:order@dijibio.com)

Tel: (86) 519 8805 0026

## NR2F6 Antibody [#C10336]

**Catalog Number:** C10336

**Concentration:** 1mg/ml

**Swiss-Prot No.:** P10588

**Other Names:** EAR2, ERBAL2, NR2F6, Orphan nuclear receptor EAR-2, V-erbA related protein EAR-2

**Storage/Stability:** Store at -20°C/1 year

**Form of Antibody:** Rabbit IgG in phosphate buffered saline (without Mg<sup>2+</sup> and Ca<sup>2+</sup>), pH 7.4, 150mM NaCl, 0.02% sodium azide and 50% glycerol.

**Immunogen:** The antiserum was produced against synthesized peptide derived from N-terminal of human NR2F6.

**Purification:** The antibody was affinity-purified from

rabbit antiserum by affinity-chromatography using epitope-specific immunogen.

**Specificity:** NR2F6 antibody detects endogenous levels of total NR2F6 protein.

**Reactivity:** Human, Mouse, Rat

**Applications:** WB: 1:500~1:3000 IHC: 1:50~1:100

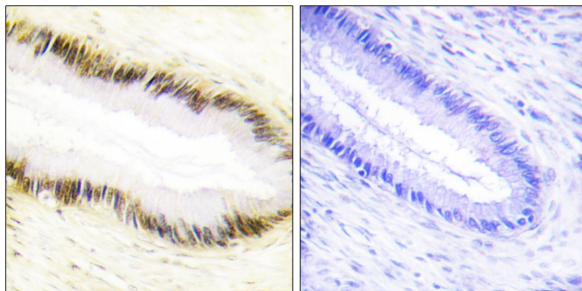
IF: 1:100~1:500 ELISA: 1:20000

**References:**

Miyajima N., Nucleic Acids Res. 16:11057-11074(1988).

The MGC Project Team, Genome Res. 14:2121-2127(2004).

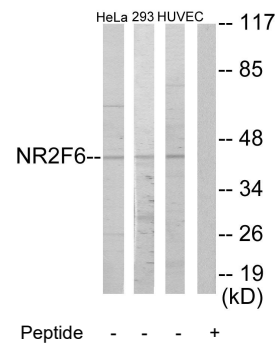
Beausoleil S.A., Proc. Natl. Acad. Sci. U.S.A. 101:12130-12135(2004).



Peptide -

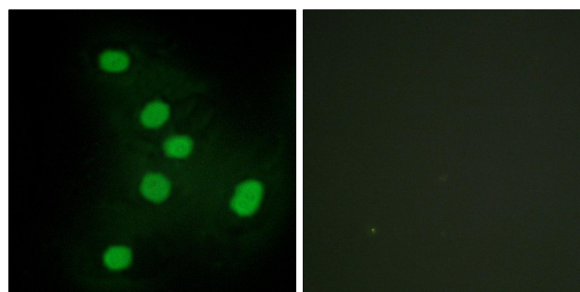
+

Immunohistochemistry analysis of paraffin-embedded human cervix carcinoma tissue using NR2F6 antibody.



Peptide - - - +

Western blot analysis of extracts from HeLa cells, 293 cells and HUVEC cells, using NR2F6 antibody.



Peptide -

+

Immunofluorescence analysis of HepG2 cells, using NR2F6 antibody.

