



**Web:** [www.anbobio.com](http://www.anbobio.com)  
[www.dijibio.com](http://www.dijibio.com)  
**Order:** [order@dijibio.com](mailto:order@dijibio.com)  
**Tel:** (86) 519 8805 0026

## EGR2 Antibody [#C10341]

**Catalog Number:** C10341

**Concentration:** 1mg/ml

**Swiss-Prot No.:** P11161

**Other Names:** AT591; CMT1D; CMT4E;

DKFZp686J1957; early growth response 2; Early growth response protein 2; EGR-2; EGR2; FLJ14547; Krox-20 homolog, Drosophila; KROX-20, Drosophila, homolog (early growth response-2); KROX20; Zinc finger protein Krox-20

**Storage/Stability:** Store at -20°C/1 year

**Form of Antibody:** Rabbit IgG in phosphate buffered saline (without Mg<sup>2+</sup> and Ca<sup>2+</sup>), pH 7.4, 150mM NaCl, 0.02% sodium azide and 50% glycerol.

**Immunogen:** The antiserum was produced against synthesized peptide derived from C-terminal of human

EGR2.

**Purification:** The antibody was affinity-purified from rabbit antiserum by affinity-chromatography using epitope-specific immunogen.

**Specificity:** EGR2 antibody detects endogenous levels of total EGR2 protein.

**Reactivity:** Human; Mouse; Rat

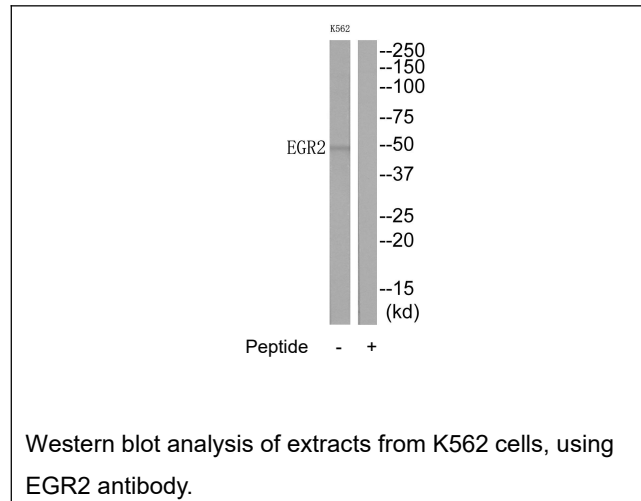
**Applications:** WB: 1:500~1:3000 ELISA: 1:10000

**References:**

Joseph L.J., Proc. Natl. Acad. Sci. U.S.A. 85:7164-7168(1988).

Warner L.E., Nat. Genet. 18:382-384(1998).

Bechtel S., BMC Genomics 8:399-399(2007).



**For Research Use Only**