



Web: www.anbio.com
www.dijibio.com
Order: order@dijibio.com
Tel: (86) 519 8805 0026

TOP2A Antibody [#C10345]

Catalog Number: C10345

Concentration: 1mg/ml

Swiss-Prot No.: P11388

Other Names: DNA topoisomerase 2-alpha, EC 5.99.1.3, DNA topoisomerase II, alpha isozyme, TOP2A, TOP2

Storage/Stability: Store at -20°C/1 year

Form of Antibody: Rabbit IgG in phosphate buffered saline (without Mg²⁺ and Ca²⁺), pH 7.4, 150mM NaCl, 0.02% sodium azide and 50% glycerol.

Immunogen: The antiserum was produced against synthesized peptide derived from N-terminal of human TOP2A.

Purification: The antibody was affinity-purified from

rabbit antiserum by affinity-chromatography using epitope-specific immunogen.

Specificity: TOP2A antibody detects endogenous levels of total TOP2A protein.

Reactivity: Human

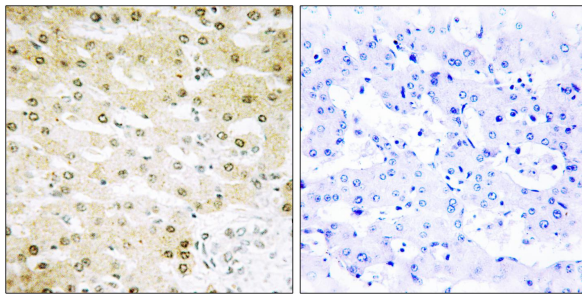
Applications: WB: 1:500~1:3000 IHC: 1:50~1:100
IF: 1:100~1:500 ELISA: 1:20000

References:

Tsai-Pflugfelder M., Proc. Natl. Acad. Sci. U.S.A. 85:7177-7181(1988).

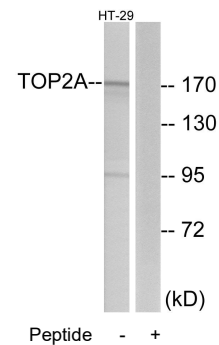
Wasserman R.A., Cancer Res. 53:3591-3596(1993).

Lang A.J., Gene 221:255-266(1998).

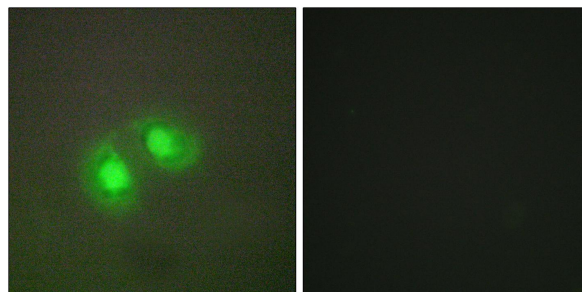


Peptide - +

Immunohistochemistry analysis of paraffin-embedded human liver carcinoma tissue using TOP2A antibody.



Western blot analysis of extracts from HT-29 cells, using TOP2A antibody.



Peptide - +

Immunofluorescence analysis of A549 cells, using TOP2A antibody.