



Web: www.anbobio.com
www.dijibio.com
Order: order@dijibio.com
Tel: (86) 519 8805 0026

Lyl-1 Antibody [#C10354]

Catalog Number: C10354

Concentration: 1mg/ml

Swiss-Prot No.: P12980

Other Names: Protein lyl-1, Lymphoblastic leukemia-derived sequence 1, LYL1

Storage/Stability: Store at -20°C/1 year

Form of Antibody: Rabbit IgG in phosphate buffered saline (without Mg²⁺ and Ca²⁺), pH 7.4, 150mM NaCl, 0.02% sodium azide and 50% glycerol.

Immunogen: The antiserum was produced against synthesized peptide derived from internal of human Lyl-1.

Purification: The antibody was affinity-purified from rabbit antiserum by affinity-chromatography using

epitope-specific immunogen.

Specificity: Lyl-1 antibody detects endogenous levels of total Lyl-1 protein.

Reactivity: Human (Identities = 100%, Positives = 100%);

Mouse (Identities = 100%, Positives = 100%);

Rat (Identities = 100%, Positives = 100%)

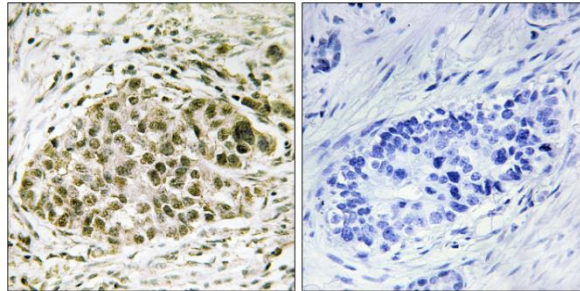
Applications: IHC: 1:50~1:100 ELISA: 1:5000

References:

Mellentin J.D., Cell 58:77-83(1989).

Grimwood J., Nature 428:529-535(2004).

The MGC Project Team, Genome Res. 14:2121-2127(2004).



Peptide

-

+

Immunohistochemistry analysis of paraffin-embedded human lung carcinoma tissue, using Lyl-1 antibody.