



**Web:** [www.anbobio.com](http://www.anbobio.com)  
[www.dijibio.com](http://www.dijibio.com)  
**Order:** [order@dijibio.com](mailto:order@dijibio.com)  
**Tel:** (86) 519 8805 0026

## GLU2B Antibody [#C10365]

**Catalog Number:** C10365

**Concentration:** 1mg/ml

**Swiss-Prot No.:** P14314

**Other Names:** 80K-H, AGE-R2, AGE-binding receptor 2, G19P1, GLU2B, PCLD, PKCSH, glucosidase II beta subunit, glucosidase II, beta subunit, hepatocystin, protein kinase C substrate, 60.1 kDa protein, heavy chain

**Storage/Stability:** Store at -20°C/1 year

**Form of Antibody:** Rabbit IgG in phosphate buffered saline (without Mg<sup>2+</sup> and Ca<sup>2+</sup>), pH 7.4, 150mM NaCl, 0.02% sodium azide and 50% glycerol.

**Immunogen:** The antiserum was produced against synthesized peptide derived from internal of human

GLU2B.

**Purification:** The antibody was affinity-purified from rabbit antiserum by affinity-chromatography using epitope-specific immunogen.

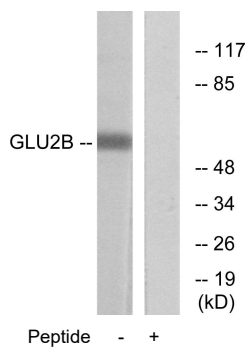
**Specificity:** GLU2B antibody detects endogenous levels of total GLU2B protein.

**Reactivity:** Human, Mouse

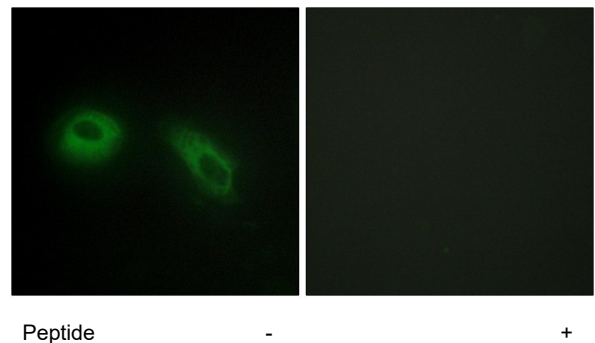
**Applications:** WB: 1:500~1:3000 IF: 1:100~1:500  
ELISA: 1:10000

**References:**

Ophoff R.A., Eur. J. Hum. Genet. 4:321-328(1996).  
Pelletier M.F., Glycobiology 10:815-827(2000).  
Gevaert K., Nat. Biotechnol. 21:566-569(2003).



Western blot analysis of extracts from mouse brain cells, using GLU2B antibody.



Immunofluorescence analysis of HeLa cells, using GLU2B antibody.