



Web: [www.anbobio.com](http://www.anbobio.com)  
[www.dijibio.com](http://www.dijibio.com)  
Order: [order@dijibio.com](mailto:order@dijibio.com)  
Tel: (86) 519 8805 0026

## IRF2 Antibody [#C10366]

**Catalog Number:** C10366

**Concentration:** 1mg/ml

**Swiss-Prot No.:** P14316

**Other Names:** IRF2, Interferon regulatory factor 2

**Storage/Stability:** Store at -20°C/1 year

**Form of Antibody:** Rabbit IgG in phosphate buffered saline (without Mg<sup>2+</sup> and Ca<sup>2+</sup>), pH 7.4, 150mM NaCl, 0.02% sodium azide and 50% glycerol.

**Immunogen:** The antiserum was produced against synthesized peptide derived from internal of human IRF2.

**Purification:** The antibody was affinity-purified from

rabbit antiserum by affinity-chromatography using epitope-specific immunogen.

**Specificity:** IRF2 antibody detects endogenous levels of total IRF2 protein.

**Reactivity:** Human, Mouse, Rat

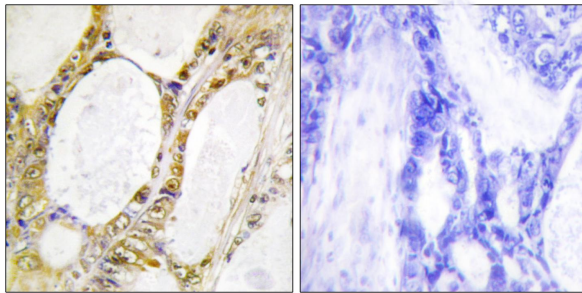
**Applications:** WB: 1:500~1:3000 IHC: 1:50~1:100  
ELISA: 1:20000

**References:**

Itoh S., Nucleic Acids Res. 17:8372-8372(1989).

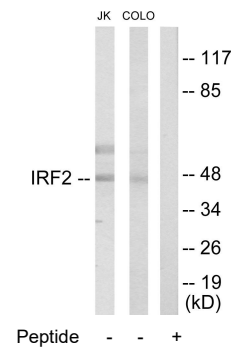
Cha Y., J. Biol. Chem. 269:5279-5287(1994).

Staal A., J. Cell. Physiol. 185:269-279(2000).



Peptide - +

Immunohistochemistry analysis of paraffin-embedded human colon carcinoma tissue, using IRF2 antibody.



Western blot analysis of extracts from Jurkat cells and COLO205 cells, using IRF2 antibody.

**For Research Use Only**