



Web: www.anbio.com
www.dijibio.com
Order: order@dijibio.com
Tel: (86) 519 8805 0026

B-RAF Antibody [#C10378]

Catalog Number: C10378

Concentration: 1mg/ml

Swiss-Prot No.: P15056

Other Names: B-RAF, B-RAF proto-oncogene serine/threonine-protein kinase, B-Raf proto-oncogene serine/threonine-protein kinase, BRAF, BRAF1, EC 2.7.1.37, EC 2.7.11.1, RAFB1, RMIL, RMIL serine/threonine-protein kinase, c-RMIL, kinase B-Raf, p94, v-Raf murine sarcoma viral oncogene homolog B1

Storage/Stability: Store at -20°C/1 year

Form of Antibody: Rabbit IgG in phosphate buffered saline (without Mg²⁺ and Ca²⁺), pH 7.4, 150mM NaCl, 0.02% sodium azide and 50% glycerol.

Immunogen: The antiserum was produced against

synthesized peptide derived from internal of human B-RAF.

Purification: The antibody was affinity-purified from rabbit antiserum by affinity-chromatography using epitope-specific immunogen.

Specificity: B-RAF antibody detects endogenous levels of total B-RAF protein.

Reactivity: Human, Mouse

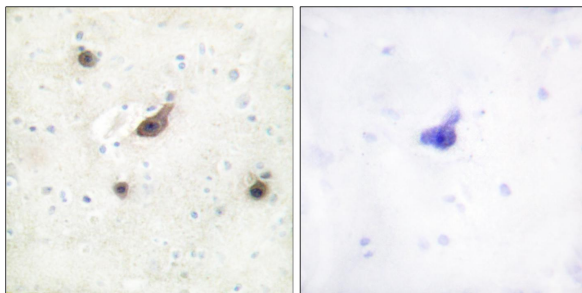
Applications: WB: 1:500~1:3000 IHC: 1:50~1:100
IF: 1:100~1:500 ELISA: 1:20000

References:

Stephens R.M., Mol. Cell. Biol. 12:3733-3742(1992).

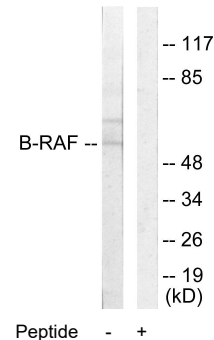
Hillier L.W., Nature 424:157-164(2003).

Eychene A., Oncogene 7:1657-1660(1992).



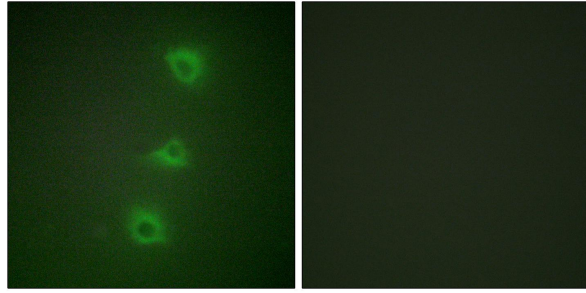
Peptide - +

Immunohistochemistry analysis of paraffin-embedded human brain tissue using B-RAF antibody.



Peptide - +

Western blot analysis of extracts from HeLa cells, using B-RAF antibody.



Peptide - +

Immunofluorescence analysis of HUVEC cells, using B-RAF antibody.