



Web: www.anbobio.com
www.dijibio.com
Order: order@dijibio.com
Tel: (86) 519 8805 0026

CKMT2 Antibody [#C10407]

Catalog Number: C10407

Concentration: 1mg/ml

Swiss-Prot No.: P17540

Other Names: Creatine kinase, sarcomeric mitochondrial [Precursor], EC 2.7.3.2, S-MtCK, Mib-CK, Basic-type mitochondrial creatine kinase, CKMT2

Storage/Stability: Store at -20°C/1 year

Form of Antibody: Rabbit IgG in phosphate buffered saline (without Mg²⁺ and Ca²⁺), pH 7.4, 150mM NaCl, 0.02% sodium azide and 50% glycerol.

Immunogen: The antiserum was produced against synthesized peptide derived from internal of human CKMT2.

Purification: The antibody was affinity-purified from rabbit antiserum by affinity-chromatography using epitope-specific immunogen.

Specificity: CKMT2 antibody detects endogenous levels of total CKMT2 protein.

Reactivity: Human, Mouse, Rat

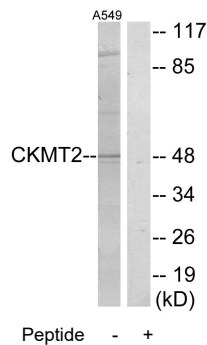
Applications: WB: 1:500~1:3000 IF: 1:100~1:500
ELISA: 1:40000

References:

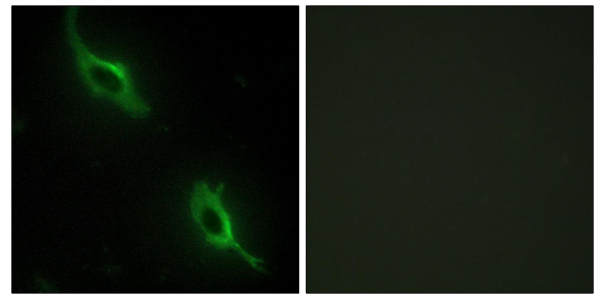
Haas R.C., J. Biol. Chem. 265:6921-6927(1990).

The MGC Project Team, Genome Res. 14:2121-2127(2004).

Haas R.C., J. Biol. Chem. 264:2890-2897(1989).



Western blot analysis of extracts from A549 cells, using CKMT2 antibody.



Immunofluorescence analysis of NIH/3T3 cells, using CKMT2 antibody.