



**Web:** [www.anbio.com](http://www.anbio.com)  
[www.dijibio.com](http://www.dijibio.com)  
**Order:** [order@dijibio.com](mailto:order@dijibio.com)  
**Tel:** (86) 519 8805 0026

## Adrenergic Receptor $\alpha$ -2B Antibody [#C10415]

**Catalog Number:** C10415

**Concentration:** 1mg/ml

**Swiss-Prot No.:** P18089

**Other Names:** ADA2B, ADRA2L1, ADRA2RL1, ADRARL1, ALPHA2BAR, G-protein coupled receptor, adrenergic receptor alpha 2B, adrenergic receptor, alpha-2B, alpha-2-adrenergic receptor-like 1, alpha-2B adrenergic receptor, alpha-2B adrenoceptor, alpha-2B adrenoceptor, alpha-2B-adrenergic receptor, subtype C2

**Storage/Stability:** Store at  $-20^{\circ}\text{C}$ /1 year

**Form of Antibody:** Rabbit IgG in phosphate buffered saline (without  $\text{Mg}^{2+}$  and  $\text{Ca}^{2+}$ ), pH 7.4, 150mM NaCl, 0.02% sodium azide and 50% glycerol.

**Immunogen:** The antiserum was produced against

synthesized peptide derived from internal of human Adrenergic Receptor  $\alpha$ -2B.

**Purification:** The antibody was affinity-purified from rabbit antiserum by affinity-chromatography using epitope-specific immunogen.

**Specificity:** Adrenergic Receptor  $\alpha$ -2B antibody detects endogenous levels of total Adrenergic Receptor  $\alpha$ -2B protein.

**Reactivity:** Human (Identities = 100%, Positives = 100%)

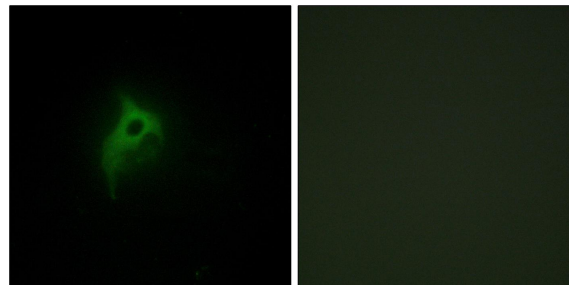
**Applications:** IF: 1:100~1:500 ELISA: 1:10000

**References:**

Lomasney J.W., Proc. Natl. Acad. Sci. U.S.A. 87:5094-5098(1990).

Weinshank R.L., Mol. Pharmacol. 38:681-688(1990).

Small K.M., J. Biol. Chem. 276:4917-4922(2001).



Peptide

-

+

Immunofluorescence analysis of HepG2 cells, using Adrenergic Receptor  $\alpha$ -2B antibody.