



Web: www.anbobio.com
www.dijibio.com
Order: order@dijibio.com
Tel: (86) 519 8805 0026

ATF1 Antibody [#C10419]

Catalog Number: C10419

Concentration: 1mg/ml

Swiss-Prot No.: P18846

Other Names: ATF1, Activating transcription factor 1, Cyclic-AMP-dependent transcription factor ATF-1, TCR-ATF1, TREB36 protein

Storage/Stability: Store at -20°C/1 year

Form of Antibody: Rabbit IgG in phosphate buffered saline (without Mg²⁺ and Ca²⁺), pH 7.4, 150mM NaCl, 0.02% sodium azide and 50% glycerol.

Immunogen: The antiserum was produced against synthesized peptide derived from internal of human ATF1.

Purification: The antibody was affinity-purified from rabbit antiserum by affinity-chromatography using epitope-specific immunogen.

Specificity: ATF1 antibody detects endogenous levels of total ATF1 protein.

Reactivity: Human, Mouse, Rat

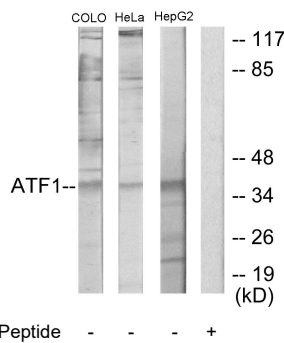
Applications: WB: 1:500~1:3000 IF: 1:100~1:500
ELISA: 1:5000

References:

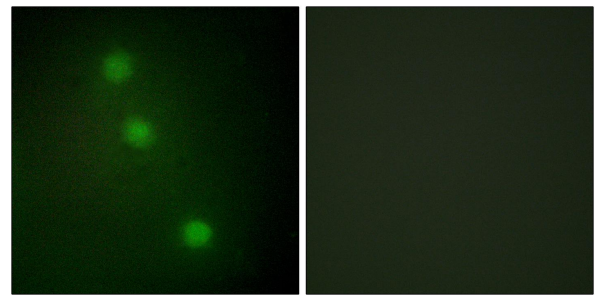
Yoshimura T., EMBO J. 9:2537-2542(1990).

Reh fuss R.P., J. Biol. Chem. 266:18431-18434(1991).

Hai T., Genes Dev. 3:2083-2090(1989).



Western blot analysis of extracts from COLO205 cells, HeLa cells and HepG2 cells, using ATF1 antibody.



Immunofluorescence analysis of HUVEC cells, using ATF1 antibody.