



Web: www.anbobio.com
www.dijibio.com
Order: order@dijibio.com
Tel: (86) 519 8805 0026

EFNA1 Antibody [#C10440]

Catalog Number: C10440

Concentration: 1mg/ml

Swiss-Prot No.: P20827

Other Names: Ephrin-A1 [Precursor], EPH-related receptor tyrosine kinase ligand 1, LERK-1, Immediate early response protein B61, Tumor necrosis factor, alpha-induced protein 4, EFNA1, EPLG1, LERK1, TNFAIP4

Storage/Stability: Store at -20°C/1 year

Form of Antibody: Rabbit IgG in phosphate buffered saline (without Mg²⁺ and Ca²⁺), pH 7.4, 150mM NaCl, 0.02% sodium azide and 50% glycerol.

Immunogen: The antiserum was produced against synthesized peptide derived from internal of human

EFNA1.

Purification: The antibody was affinity-purified from rabbit antiserum by affinity-chromatography using epitope-specific immunogen.

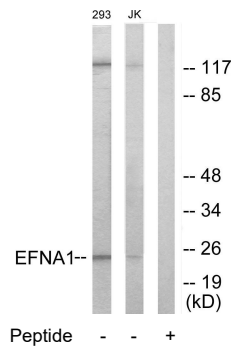
Specificity: EFNA1 antibody detects endogenous levels of total EFNA1 protein.

Reactivity: Human, Mouse, Rat

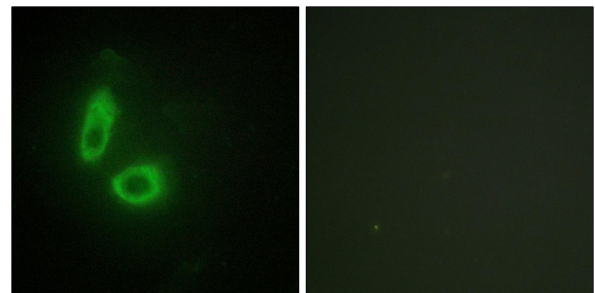
Applications: WB: 1:500~1:3000 IF: 1:100~1:500
ELISA: 1:10000

References:

Holzman L.B., Mol. Cell. Biol. 10:5830-5838(1990).
Gregory S.G., Nature 441:315-321(2006).
Zhang Z., Protein Sci. 13:2819-2824(2004).



Western blot analysis of extracts from 293 cells and Jurkat cells, using EFNA1 antibody.



Immunofluorescence analysis of HeLa cells, using EFNA1 antibody.