



Web: [www.anbobio.com](http://www.anbobio.com)

[www.dijibio.com](http://www.dijibio.com)

Order: [order@dijibio.com](mailto:order@dijibio.com)

Tel: (86) 519 8805 0026

## CRP1 Antibody [#C10443]

**Catalog Number:** C10443

**Concentration:** 1mg/ml

**Swiss-Prot No.:** P21291

**Other Names:** CRP, CRP1, CSRP, CYRP, cysteine and glycine-rich 1

**Storage/Stability:** Store at -20°C/1 year

**Form of Antibody:** Rabbit IgG in phosphate buffered saline (without Mg<sup>2+</sup> and Ca<sup>2+</sup>), pH 7.4, 150mM NaCl, 0.02% sodium azide and 50% glycerol.

**Immunogen:** The antiserum was produced against synthesized peptide derived from internal of human CRP1.

**Purification:** The antibody was affinity-purified from rabbit antiserum by affinity-chromatography using epitope-specific immunogen.

**Specificity:** CRP1 antibody detects endogenous levels of total CRP1 protein.

**Reactivity:** Human, Mouse, Rat

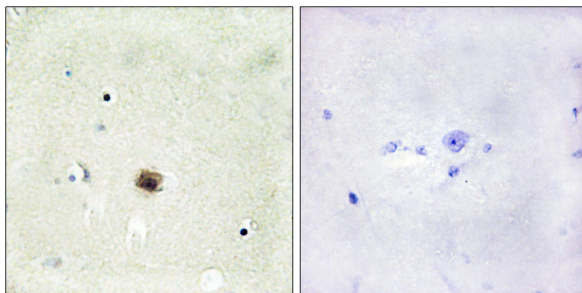
**Applications:** WB: 1:500~1:3000 IHC: 1:50~1:100  
ELISA: 1:20000

**References:**

Liebhaber S.A., Nucleic Acids Res. 18:3871-3879(1990).

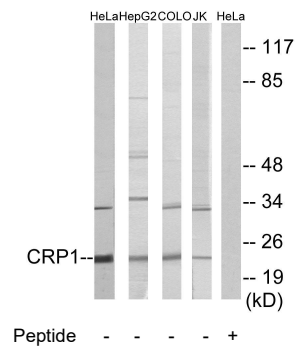
Olsen J.V., Cell 127:635-648(2006).

Beausoleil S.A., Nat. Biotechnol. 24:1285-1292(2006).



Peptide - +

Immunohistochemistry analysis of paraffin-embedded human brain tissue using CRP1 antibody.



Western blot analysis of extracts from HeLa, HepG2 cells, COLO cells and Jurkat cells, using CRP1 antibody.