



**Web:** [www.anbobio.com](http://www.anbobio.com)  
[www.dijibio.com](http://www.dijibio.com)  
**Order:** [order@dijibio.com](mailto:order@dijibio.com)  
**Tel:** (86) 519 8805 0026

## TAF1 Antibody [#C10445]

**Catalog Number:** C10445

**Concentration:** 1mg/ml

**Swiss-Prot No.:** P21675

**Other Names:** BA2R, CCG1, Cell cycle gene 1 protein, EC 2.7.11.1, P250, T2D1, TAF2A, TAFII-250, TAFII250, TBP-associated factor 250 kDa, Transcription initiation factor TFIID 250 kDa subunit, kinase TAF1

**Storage/Stability:** Store at -20°C/1 year

**Form of Antibody:** Rabbit IgG in phosphate buffered saline (without Mg<sup>2+</sup> and Ca<sup>2+</sup>), pH 7.4, 150mM NaCl, 0.02% sodium azide and 50% glycerol.

**Immunogen:** The antiserum was produced against synthesized peptide derived from internal of human TAF1.

**Purification:** The antibody was affinity-purified from rabbit antiserum by affinity-chromatography using epitope-specific immunogen.

**Specificity:** TAF1 antibody detects endogenous levels of total TAF1 protein.

**Reactivity:** Human (Identities = 100%, Positives = 100%);  
Mouse (Identities = 100%, Positives = 100%)

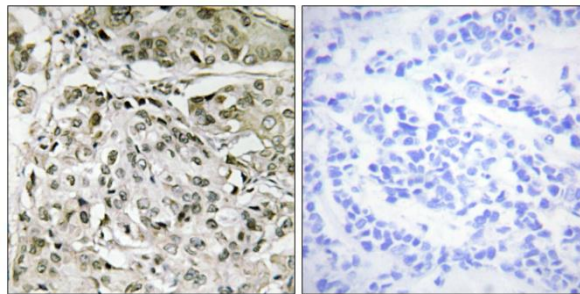
**Applications:** IHC: 1:50~1:100 ELISA: 1:10000

**References:**

Sekiguchi T., Mol. Cell. Biol. 11:3317-3325(1991).

Ruppert S., Nature 362:175-179(1993).

Nolte D., Proc. Natl. Acad. Sci. U.S.A. 100:10347-10352(2003).



Peptide

-

+

Immunohistochemistry analysis of paraffin-embedded human breast carcinoma tissue, using TAF1 antibody.