



Web: www.anbobio.com

www.dijibio.com

Order: order@dijibio.com

Tel: (86) 519 8805 0026

EPHA1Antibody [#C10446]

Catalog Number: C10446

Concentration: 1mg/ml

Swiss-Prot No.: P21709

Other Names: EC 2.7.10.1, EPA1, EPH, EPHT, EPHT1, Tyrosine-protein kinase receptor EPH

Storage/Stability: Store at -20°C/1 year

Form of Antibody: Rabbit IgG in phosphate buffered saline (without Mg²⁺ and Ca²⁺), pH 7.4, 150mM NaCl, 0.02% sodium azide and 50% glycerol.

Immunogen: The antiserum was produced against synthesized peptide derived from internal of human EPHA1.

Purification: The antibody was affinity-purified from rabbit antiserum by affinity-chromatography using epitope-specific immunogen.

Specificity: EPHA1antibody detects endogenous levels of total EPHA1protein.

Reactivity: Human

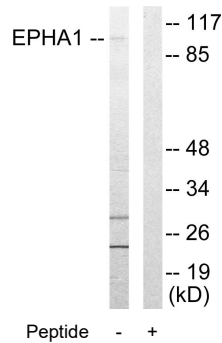
Applications: WB: 1:500~1:3000 IF: 1:100~1:500
ELISA: 1:10000

References:

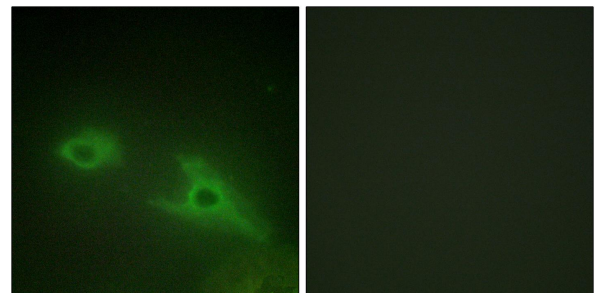
Hirai H., Science 238:1717-1720(1987).

Owshalimpur D., Mol. Cell. Probes 13:169-173(1999).

Hillier L.W., Nature 424:157-164(2003).



Western blot analysis of extracts from COLO205 cells, using EPHA1 antibody.



Immunofluorescence analysis of HeLa cells, using EPHA1 antibody.