



Web: www.anbobio.com

www.dijibio.com

Order: order@dijibio.com

Tel: (86) 519 8805 0026

S6K Antibody [#C10458]

Catalog Number: C10458

Concentration: 1mg/ml

Swiss-Prot No.: P23443

Other Names: EC 2.7.11.1, KS6B1, P70-S6K, RPS6KB1, Ribosomal protein S6 kinase, Ribosomal protein S6 kinase, 70kDa, polypeptide 1, S6K, kinase p70S6K, p70-S6K

Storage/Stability: Store at -20°C/1 year

Form of Antibody: Rabbit IgG in phosphate buffered saline (without Mg²⁺ and Ca²⁺), pH 7.4, 150mM NaCl, 0.02% sodium azide and 50% glycerol.

Immunogen: The antiserum was produced against synthesized peptide derived from internal of human S6K.

Purification: The antibody was affinity-purified from rabbit antiserum by affinity-chromatography using epitope-specific immunogen.

Specificity: S6K antibody detects endogenous levels of total S6K protein.

Reactivity: Human, Mouse, Rat

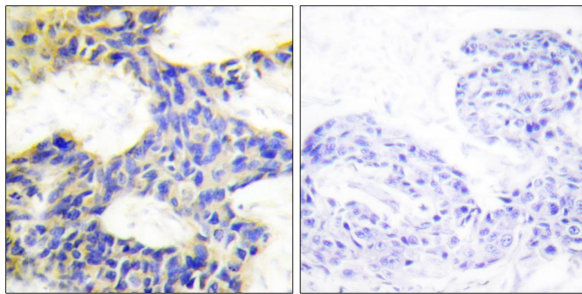
Applications: WB: 1:500~1:3000 IHC: 1:50~1:100
ELISA: 1:5000

References:

Grove J., Mol. Cell. Biol. 11:5541-5550(1991).

Gout I., J. Biol. Chem. 273:30061-30064(1998).

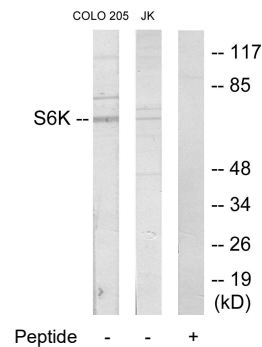
Olsen J.V., Cell 127:635-648(2006).



Peptide -

+

Immunohistochemistry analysis of paraffin-embedded human breast carcinoma tissue using S6K antibody.



Peptide - - +

Western blot analysis of extracts from COLO205 cells and Jurkat cells, using S6K antibody.