



**Web:** [www.anbio.com](http://www.anbio.com)  
[www.dijibio.com](http://www.dijibio.com)  
**Order:** [order@dijibio.com](mailto:order@dijibio.com)  
**Tel:** (86) 519 8805 0026

## COT2 Antibody [#C10471]

**Catalog Number:** C1111

**Concentration:** 1mg/ml

**Swiss-Prot No.:** P24468

**Other Names:** COUP transcription factor 2, COUP-TF2, COUP-TF II, Nuclear receptor subfamily 2 group F member 2, Apolipoprotein AI regulatory protein 1, ARP-1, NR2F2, ARP1, TFCOUP2

**Storage/Stability:** Store at -20°C/1 year

**Form of Antibody:** Rabbit IgG in phosphate buffered saline (without Mg<sup>2+</sup> and Ca<sup>2+</sup>), pH 7.4, 150mM NaCl, 0.02% sodium azide and 50% glycerol.

**Immunogen:** The antiserum was produced against synthesized peptide derived from N-terminal of human COT2.

**Purification:** The antibody was affinity-purified from rabbit antiserum by affinity-chromatography using epitope-specific immunogen.

**Specificity:** COT2 antibody detects endogenous levels of total COT2 protein.

**Reactivity:** Human, Mouse, Rat

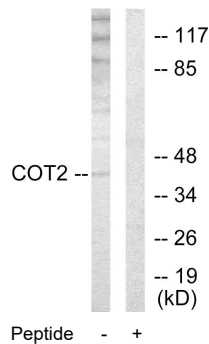
**Applications:** WB: 1:500~1:3000 IF: 1:100~1:500  
ELISA: 1:10000

**References:**

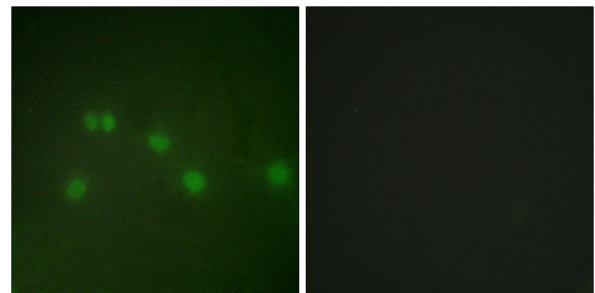
Ladias J.A.A., Science 251:561-565(1991).

The MGC Project Team, Genome Res. 14:2121-2127(2004).

Wang L.H., Gene Expr. 1:207-216(1991).



Western blot analysis of extracts from HUVEC cells, using COT2 antibody.



Immunofluorescence analysis of HUVEC cells, using COT2 antibody.