



Web: www.anbobio.com
www.dijibio.com
Order: order@dijibio.com
Tel: (86) 519 8805 0026

MARK3 Antibody [#C10490]

Catalog Number: C10490

Concentration: 1mg/ml

Swiss-Prot No.: P27448

Other Names: C-TAK1, Cdc25C-associated protein kinase 1, EC 2.7.11.1, MAP/microtubule affinity-regulating kinase 3, Protein kinase STK10, Ser/Thr protein kinase PAR-1, Serine/threonine protein kinase p78, cTAK1

Storage/Stability: Store at -20°C/1 year

Form of Antibody: Rabbit IgG in phosphate buffered saline (without Mg²⁺ and Ca²⁺), pH 7.4, 150mM NaCl, 0.02% sodium azide and 50% glycerol.

Immunogen: The antiserum was produced against synthesized peptide derived from N-terminal of human

MARK3.

Purification: The antibody was affinity-purified from rabbit antiserum by affinity-chromatography using epitope-specific immunogen.

Specificity: MARK3 antibody detects endogenous levels of total MARK3 protein.

Reactivity: Human, Mouse, Rat

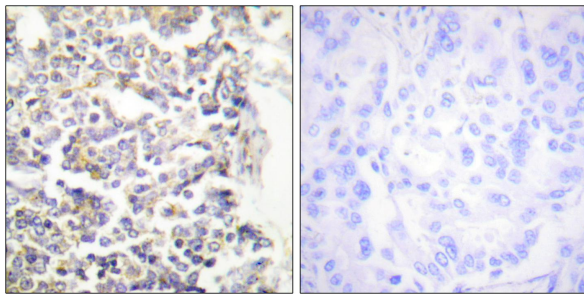
Applications: WB: 1:500~1:3000 IHC: 1:50~1:100
ELISA: 1:5000

References:

Peng C.Y., Cell Growth Differ. 9:197-208(1998).

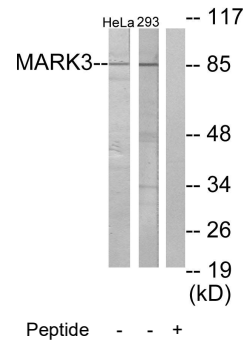
Sun T.-Q., Nat. Cell Biol. 3:628-636(2001).

Wissing J., Mol. Cell. Proteomics 6:537-547(2007).



Peptide - +

Immunohistochemistry analysis of paraffin-embedded human lung carcinoma tissue using MARK3 antibody.



Western blot analysis of extracts from HeLa cells and 293 cells, using MARK3 antibody.