



Web: www.anbobio.com
www.dijibio.com
Order: order@dijibio.com
Tel: (86) 519 8805 0026

CALR Antibody [#C10495]

Catalog Number: C10495

Concentration: 1mg/ml

Swiss-Prot No.: P27797

Other Names: CALR, CRP55, CRTC, Calreticulin precursor, ERp60, HACBP, grp60

Storage/Stability: Store at -20°C/1 year

Form of Antibody: Rabbit IgG in phosphate buffered saline (without Mg²⁺ and Ca²⁺), pH 7.4, 150mM NaCl, 0.02% sodium azide and 50% glycerol.

Immunogen: The antiserum was produced against synthesized peptide derived from internal of human CALR.

Purification: The antibody was affinity-purified from rabbit antiserum by affinity-chromatography using epitope-specific immunogen.

Specificity: CALR antibody detects endogenous levels of total CALR protein.

Reactivity: Human, Mouse, Rat

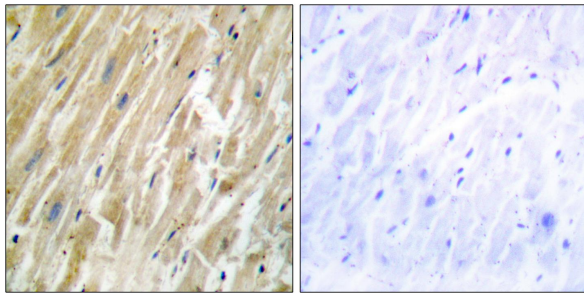
Applications: WB: 1:500~1:3000 IHC: 1:50~1:100
IF: 1:100~1:500 ELISA: 1:40000

References:

McCauliffe D.P., J. Clin. Invest. 85:1379-1391(1990).

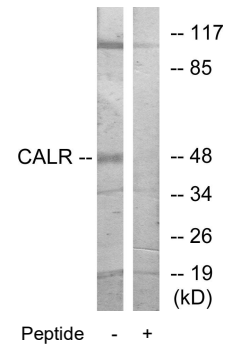
Rokeach L.A., J. Immunol. 147:3031-3039(1991).

McCauliffe D.P., J. Biol. Chem. 267:2557-2562(1992).



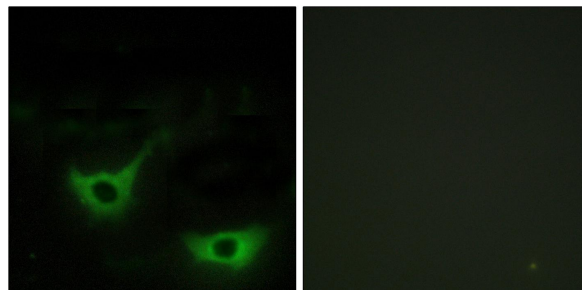
Peptide - +

Immunohistochemistry analysis of paraffin-embedded human heart tissue using CALR antibody.



Peptide - +

Western blot analysis of extracts from COS-7 cells, using CALR antibody.



Peptide - +

Immunofluorescence analysis of NIH/3T3 cells, using CALR antibody.