



Web: [www.anbobio.com](http://www.anbobio.com)  
[www.dijibio.com](http://www.dijibio.com)  
Order: [order@dijibio.com](mailto:order@dijibio.com)  
Tel: (86) 519 8805 0026

## MZF-1 Antibody [#C10502]

**Catalog Number:** C10502

**Concentration:** 1mg/ml

**Swiss-Prot No.:** P28698

**Other Names:** Myeloid zinc finger 1, MZF-1, Zinc finger protein 42, Zinc finger and SCAN domain-containing protein 6, MZF1, MZF, ZNF42, ZSCAN6

**Storage/Stability:** Store at -20°C/1 year

**Form of Antibody:** Rabbit IgG in phosphate buffered saline (without Mg<sup>2+</sup> and Ca<sup>2+</sup>), pH 7.4, 150mM NaCl, 0.02% sodium azide and 50% glycerol.

**Immunogen:** The antiserum was produced against synthesized peptide derived from N-terminal of human MZF-1.

**Purification:** The antibody was affinity-purified from rabbit antiserum by affinity-chromatography using epitope-specific immunogen.

**Specificity:** MZF-1 antibody detects endogenous levels of total MZF-1 protein.

**Reactivity:** Human

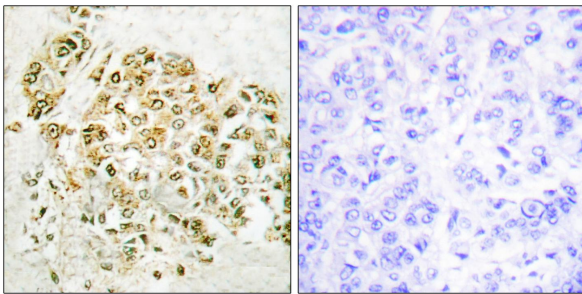
**Applications:** WB: 1:500~1:3000 IHC: 1:50~1:100  
ELISA: 1:10000

**References:**

Hromas R., J. Biol. Chem. 266:14183-14187(1991).

Peterson M.J., Gene 254:105-118(2000).

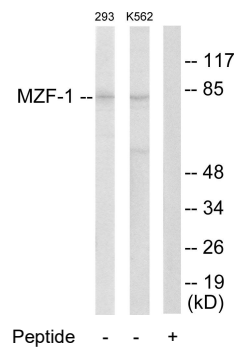
Olsen J.V., Cell 127:635-648(2006).



Peptide -

+

Immunohistochemistry analysis of paraffin-embedded human breast carcinoma tissue, using MZF-1 antibody.



Peptide - - +

Western blot analysis of extracts from 293 cells and K562 cells, using MZF-1 antibody.

**For Research Use Only**