



Web: [www.anbobio.com](http://www.anbobio.com)  
[www.dijibio.com](http://www.dijibio.com)  
Order: [order@dijibio.com](mailto:order@dijibio.com)  
Tel: (86) 519 8805 0026

## TF2E2 Antibody [#C10506]

**Catalog Number:** C10506

**Concentration:** 1mg/ml

**Swiss-Prot No.:** P29084

**Other Names:** GTF2E2, T2EB, TF2E2, Transcription initiation factor IIE beta subunit

**Storage/Stability:** Store at -20°C/1 year

**Form of Antibody:** Rabbit IgG in phosphate buffered saline (without Mg<sup>2+</sup> and Ca<sup>2+</sup>), pH 7.4, 150mM NaCl, 0.02% sodium azide and 50% glycerol.

**Immunogen:** The antiserum was produced against synthesized peptide derived from internal of human TF2E2.

**Purification:** The antibody was affinity-purified from rabbit antiserum by affinity-chromatography using epitope-specific immunogen.

**Specificity:** TF2E2 antibody detects endogenous levels of total TF2E2 protein.

**Reactivity:** Human, Mouse

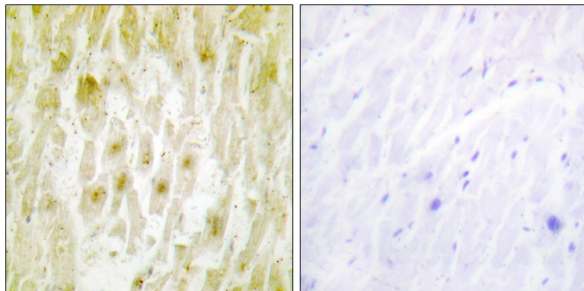
**Applications:** WB: 1:500~1:3000 IHC: 1:50~1:100  
ELISA: 1:20000

**References:**

Peterson M.G., Nature 354:369-373(1991).

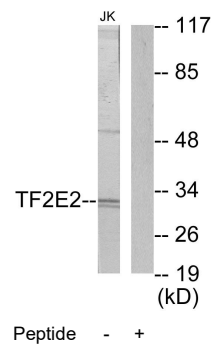
Sumimoto H., Nature 354:401-404(1991).

Kang S.-W., Genes Cells 5:251-263(2000).



Peptide - +

Immunohistochemistry analysis of paraffin-embedded human heart tissue using TF2E2 antibody.



Peptide - +

Western blot analysis of extracts from Jurkat cells, using TF2E2 antibody.