



**Web:** [www.anbobio.com](http://www.anbobio.com)  
[www.dijibio.com](http://www.dijibio.com)  
**Order:** [order@dijibio.com](mailto:order@dijibio.com)  
**Tel:** (86) 519 8805 0026

## PPIF Antibody [#C10516]

**Catalog Number:** C10516

**Concentration:** 1mg/ml

**Swiss-Prot No.:** P30405

**Other Names:** Peptidyl-prolyl cis-trans isomerase, mitochondrial [Precursor], EC 5.2.1.8, PPIase, Rotamase, Cyclophilin F, PPIF, CYP3

**Storage/Stability:** Store at -20°C/1 year

**Form of Antibody:** Rabbit IgG in phosphate buffered saline (without Mg<sup>2+</sup> and Ca<sup>2+</sup>), pH 7.4, 150mM NaCl, 0.02% sodium azide and 50% glycerol.

**Immunogen:** The antiserum was produced against synthesized peptide derived from internal of human PPIF.

**Purification:** The antibody was affinity-purified from

rabbit antiserum by affinity-chromatography using epitope-specific immunogen.

**Specificity:** PPIF antibody detects endogenous levels of total PPIF protein.

**Reactivity:** Human, Mouse, Rat

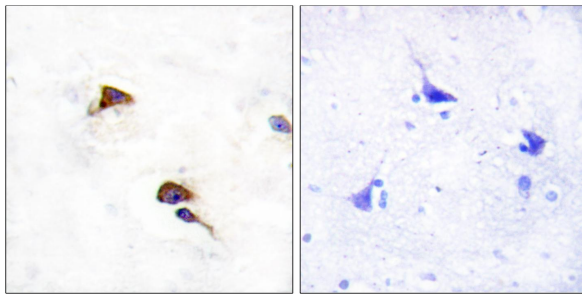
**Applications:** WB: 1:500~1:3000 IHC: 1:50~1:100  
ELISA: 1:20000

**References:**

Bergsma D.J., J. Biol. Chem. 266:23204-23214(1991).

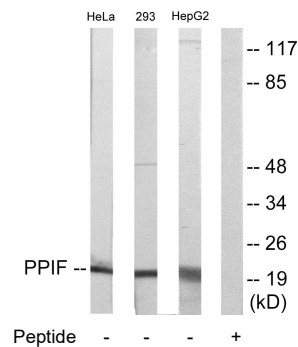
Deloukas P., Nature 429:375-381(2004).

The MGC Project Team, Genome Res. 14:2121-2127(2004).



Peptide - +

Immunohistochemistry analysis of paraffin-embedded human brain tissue using PPIF antibody.



Western blot analysis of extracts from HeLa cells, 293 cells and HepG2 cells, using PPIF antibody.