



Web: www.anbobio.com
www.dijibio.com
Order: order@dijibio.com
Tel: (86) 519 8805 0026

T4S1 Antibody [#C10517]

Catalog Number: C10517

Concentration: 1mg/ml

Swiss-Prot No.: P30408

Other Names: Transmembrane 4 L6 family member 1, Tumor-associated antigen L6, Membrane component surface marker 1, M3S1, TM4SF1, M3S1, TAAL6

Storage/Stability: Store at -20°C/1 year

Form of Antibody: Rabbit IgG in phosphate buffered saline (without Mg²⁺ and Ca²⁺), pH 7.4, 150mM NaCl, 0.02% sodium azide and 50% glycerol.

Immunogen: The antiserum was produced against synthesized peptide derived from internal of human T4S1.

Purification: The antibody was affinity-purified from

rabbit antiserum by affinity-chromatography using epitope-specific immunogen.

Specificity: T4S1 antibody detects endogenous levels of total T4S1 protein.

Reactivity: Human (Identities = 100%, Positives = 100%);
Mouse (Identities = 100%, Positives = 100%)

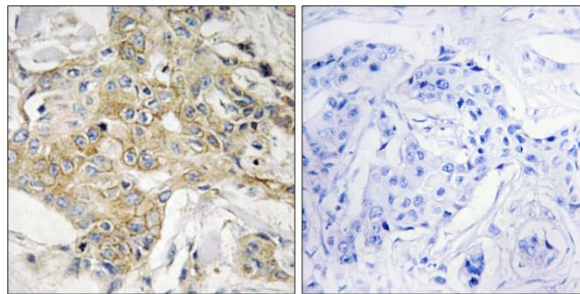
Applications: IHC: 1:50~1:100 ELISA: 1:20000

References:

Marken J.S., Proc. Natl. Acad. Sci. U.S.A. 89:3503-3507(1992).

The MGC Project Team, Genome Res. 14:2121-2127(2004).

Marken J.S., J. Biol. Chem. 269:7397-7401(1994).



Peptide - +

Immunohistochemistry analysis of paraffin-embedded human breast carcinoma tissue, using T4S1 antibody.