



**Web:** [www.anbobio.com](http://www.anbobio.com)  
[www.dijibio.com](http://www.dijibio.com)  
**Order:** [order@dijibio.com](mailto:order@dijibio.com)  
**Tel:** +86 519 8805 0026

## GPR20 Antibody [#G328]

**Catalog Number:** G328

**Concentration:** 1mg/ml

**Swiss-Prot No.:** Q99678

**Other Names:** Probable G-protein coupled receptor 20;  
GPR20

**Storage/Stability:** Store at -20°C/1 year

**Form of Antibody:** Rabbit IgG in phosphate buffered saline (without Mg<sup>2+</sup> and Ca<sup>2+</sup>), pH 7.4, 150mM NaCl, 0.02% sodium azide and 50% glycerol.

**Immunogen:** The antiserum was produced against synthesized peptide derived from internal of human

GPR20.

**Purification:** The antibody was affinity-purified from rabbit antiserum by affinity-chromatography using epitope-specific immunogen.

**Specificity:** GPR20 antibody detects endogenous levels of total GPR20 protein.

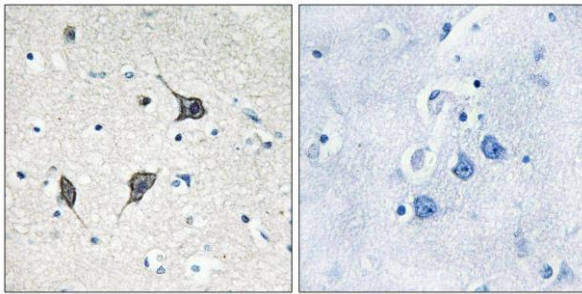
**Reactivity:** Human

**Applications:** WB: 1:500~1:3000 IHC: 1:50~1:100

IF: 1:100~1:500 ELISA: 1:1000

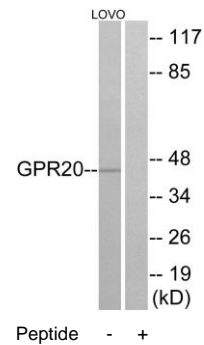
**References:**

O'Dowd B.F., Gene 187:75-81(1997).



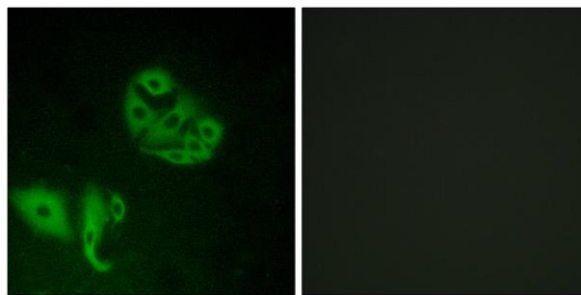
Peptide - +

Immunohistochemistry analysis of paraffin-embedded human brain tissue using GPR20 antibody.



Peptide - +

Western blot analysis of extracts from LOVO cells, using GPR20 antibody.



Peptide - +

Immunofluorescence analysis of A549 cells, using GPR20 antibody.