



Web: www.anbobio.com
www.dijibio.com
Order: order@dijibio.com
Tel: +86 519 8805 0026

GPR35 Antibody [#G338]

Catalog Number: G338

Concentration: 1mg/ml

Swiss-Prot No.: Q9HC97

Other Names: G protein-coupled receptor 35

Storage/Stability: Store at -20°C/1 year

Form of Antibody: Rabbit IgG in phosphate buffered saline (without Mg²⁺ and Ca²⁺), pH 7.4, 150mM NaCl, 0.02% sodium azide and 50% glycerol.

Immunogen: The antiserum was produced against synthesized peptide derived from internal of human GPR35.

Purification: The antibody was affinity-purified from

rabbit antiserum by affinity-chromatography using epitope-specific immunogen.

Specificity: GPR35 antibody detects endogenous levels of total GPR35 protein.

Reactivity: Human

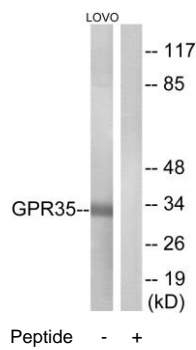
Applications: WB: 1:500~1:3000 IF: 1:100~1:500
ELISA: 1:20000

References:

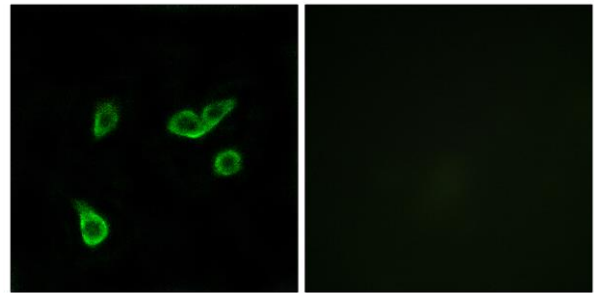
O'Dowd B.F., Genomics 47:310-313(1998).

Horikawa Y., Nat. Genet. 26:163-175(2000).

Warren C.N., Submitted (APR-2003) to the EMBL/GenBank/DDBJ databases.



Western blot analysis of extracts from LOVO cells, using GPR35 antibody.



Immunofluorescence analysis of A549 cells, using GPR35 antibody.