



**Web:** [www.anbobio.com](http://www.anbobio.com)  
[www.dijibio.com](http://www.dijibio.com)  
**Order:** [order@dijibio.com](mailto:order@dijibio.com)  
**Tel:** (86) 519 8805 0026

## TF2H1 Antibody [#C10539]

**Catalog Number:** C10539

**Concentration:** 1mg/ml

**Swiss-Prot No.:** P32780

**Other Names:** TFIID basal transcription factor complex p62 subunit, Basic transcription factor 62 kDa subunit, BTF2-p62, General transcription factor IID polypeptide 1, GTF2H1, BTF2

**Storage/Stability:** Store at -20°C/1 year

**Form of Antibody:** Rabbit IgG in phosphate buffered saline (without Mg<sup>2+</sup> and Ca<sup>2+</sup>), pH 7.4, 150mM NaCl, 0.02% sodium azide and 50% glycerol.

**Immunogen:** The antiserum was produced against synthesized peptide derived from N-terminal of human

TF2H1.

**Purification:** The antibody was affinity-purified from rabbit antiserum by affinity-chromatography using epitope-specific immunogen.

**Specificity:** TF2H1 antibody detects endogenous levels of total TF2H1 protein.

**Reactivity:** Human, Mouse

**Applications:** WB: 1:500~1:3000 IHC: 1:50~1:100

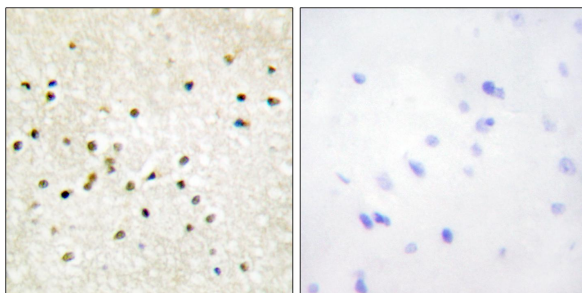
ELISA: 1:20000

**References:**

Fischer L., Science 257:1392-1395(1992).

Ota T., Nat. Genet. 36:40-45(2004).

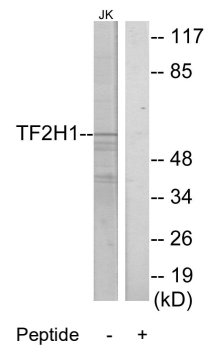
Liu J., Mol. Cell 5:331-341(2000).



Peptide -

+

Immunohistochemistry analysis of paraffin-embedded human brain tissue using TF2H1 antibody.



Peptide -

+

Western blot analysis of extracts from Jurkat cells, using TF2H1 antibody.