



Web: [www.anbobio.com](http://www.anbobio.com)  
[www.dijibio.com](http://www.dijibio.com)  
Order: [order@dijibio.com](mailto:order@dijibio.com)  
Tel: (86) 519 8805 0026

## CSTF2 Antibody [#C10542]

**Catalog Number:** C10542

**Concentration:** 1mg/ml

**Swiss-Prot No.:** P33240

**Other Names:** CF-1 64 kDa, CSTF 64 kDa, CstF-64, cleavage stimulation factor subunit 2, cleavage stimulation factor, 3' pre-RNA, subunit 2, 64kDa, cleavage stimulation factor, 64 kDa, cleavage stimulation factor, 64kDa subunit

**Storage/Stability:** Store at -20°C/1 year

**Form of Antibody:** Rabbit IgG in phosphate buffered saline (without Mg<sup>2+</sup> and Ca<sup>2+</sup>), pH 7.4, 150mM NaCl, 0.02% sodium azide and 50% glycerol.

**Immunogen:** The antiserum was produced against synthesized peptide derived from N-terminal of human

CSTF2.

**Purification:** The antibody was affinity-purified from rabbit antiserum by affinity-chromatography using epitope-specific immunogen.

**Specificity:** CSTF2 antibody detects endogenous levels of total CSTF2 protein.

**Reactivity:** Human, Mouse

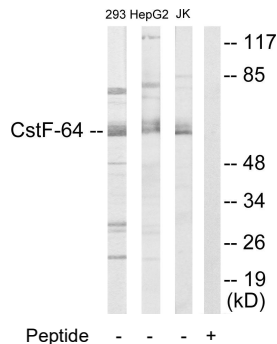
**Applications:** WB: 1:500~1:3000 IF: 1:100~1:500  
ELISA: 1:10000

**References:**

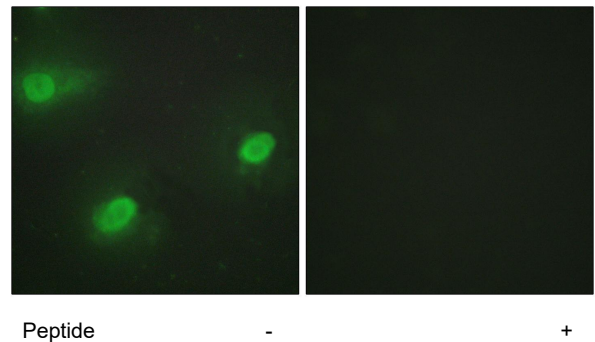
Takagaki Y., Proc. Natl. Acad. Sci. U.S.A. 89:1403-1407(1992).

Ross M.T., Nature 434:325-337(2005).

Takagaki Y., Mol. Cell. Biol. 17:3907-3914(1997).



Western blot analysis of extracts from 293 cells. HepG2 cells and Jurkat cells, using CSTF2 antibody.



Immunofluorescence analysis of HeLa cells, using CSTF2 antibody.