



**Web:** [www.anbobio.com](http://www.anbobio.com)  
[www.dijibio.com](http://www.dijibio.com)  
**Order:** [order@dijibio.com](mailto:order@dijibio.com)  
**Tel:** (86) 519 8805 0026

## CKS2 Antibody [#C10543]

**Catalog Number:** C10543

**Concentration:** 1mg/ml

**Swiss-Prot No.:** P33552

**Other Names:** Cyclin-dependent kinases regulatory subunit 2, CKS-2, CKS2

**Storage/Stability:** Store at -20°C/1 year

**Form of Antibody:** Rabbit IgG in phosphate buffered saline (without Mg<sup>2+</sup> and Ca<sup>2+</sup>), pH 7.4, 150mM NaCl, 0.02% sodium azide and 50% glycerol.

**Immunogen:** The antiserum was produced against synthesized peptide derived from internal of human CKS2.

**Purification:** The antibody was affinity-purified from

rabbit antiserum by affinity-chromatography using epitope-specific immunogen.

**Specificity:** CKS2 antibody detects endogenous levels of total CKS2 protein.

**Reactivity:** Human (Identities = 100%, Positives = 100%);  
Mouse (Identities = 100%, Positives = 100%)

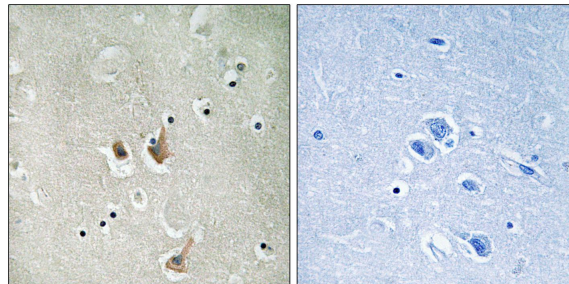
**Applications:** IHC: 1:50~1:100 ELISA: 1:20000

**References:**

Richardson H.E., Genes Dev. 4:1332-1344(1990).

The MGC Project Team, Genome Res. 14:2121-2127(2004).

Parge H.E., Science 262:387-395(1993).



Peptide

-

+

Immunohistochemistry analysis of paraffin-embedded human brain tissue, using CKS2 antibody.