



Web: www.anbobio.com
www.dijibio.com
Order: order@dijibio.com
Tel: (86) 519 8805 0026

RORA Antibody [#C10554]

Catalog Number: C10554

Concentration: 1mg/ml

Swiss-Prot No.: P35398

Other Names: Nuclear receptor ROR-alpha, Retinoid-related orphan receptor-alpha, Nuclear receptor RZR-alpha, Nuclear receptor subfamily 1 group F member 1, RORA, NR1F1, RZRA

Storage/Stability: Store at -20°C/1 year

Form of Antibody: Rabbit IgG in phosphate buffered saline (without Mg²⁺ and Ca²⁺), pH 7.4, 150mM NaCl, 0.02% sodium azide and 50% glycerol.

Immunogen: The antiserum was produced against synthesized peptide derived from N-terminal of human RORA.

Purification: The antibody was affinity-purified from rabbit antiserum by affinity-chromatography using epitope-specific immunogen.

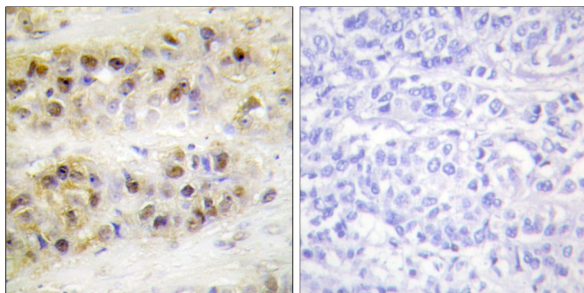
Specificity: RORA antibody detects endogenous levels of total RORA protein.

Reactivity: Human

Applications: WB: 1:500~1:3000 IHC: 1:50~1:100
ELISA: 1:40000

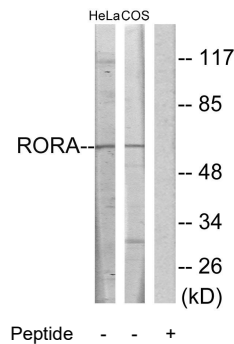
References:

Giguere V., Genes Dev. 8:538-553(1994).
Becker-Andre M., Biochem. Biophys. Res. Commun. 194:1371-1379(1993).
Sjoeblom T., Science 314:268-274(2006).



Peptide - +

Immunohistochemistry analysis of paraffin-embedded human breast carcinoma tissue using RORA antibody.



Western blot analysis of extracts from HeLa cells and COS-7 cells, using RORA antibody.