



**Web:** [www.anbobio.com](http://www.anbobio.com)  
[www.dijibio.com](http://www.dijibio.com)  
**Order:** [order@dijibio.com](mailto:order@dijibio.com)  
**Tel:** (86) 519 8805 0026

## CCBP2 Antibody [#G066]

**Catalog Number:** G066

**Concentration:** 1mg/ml

**Swiss-Prot No.:** O00590

**Other Names:** Chemokine-binding protein 2;  
Chemokine-binding protein D6; C-C chemokine receptor  
D6; Chemokine receptor CCR-9; Chemokine receptor  
CCR-10; CCBP2; CCR10, CMKBR9

**Storage/Stability:** Store at -20°C/1 year

**Form of Antibody:** Rabbit IgG in phosphate buffered  
saline (without Mg<sup>2+</sup> and Ca<sup>2+</sup>), pH 7.4, 150mM NaCl,  
0.02% sodium azide and 50% glycerol.

**Immunogen:** The antiserum was produced against  
synthesized peptide derived from C-terminal of human

CCBP2.

**Purification:** The antibody was affinity-purified from  
rabbit antiserum by affinity-chromatography using  
epitope-specific immunogen.

**Specificity:** CCBP2 antibody detects endogenous levels  
of total CCBP2 protein.

**Reactivity:** Human

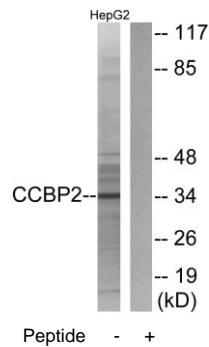
**Applications:** WB: 1:500~1:3000 IF: 1:100~1:500  
ELISA: 1:1000

**References:**

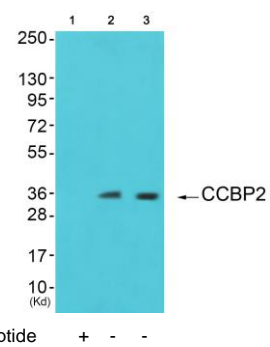
Bonini J.A., DNA Cell Biol. 16:1249-1256(1997).

Nibbs R.J.B., J. Biol. Chem. 272:32078-32083(1997).

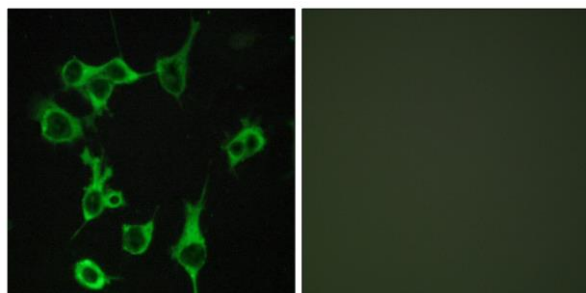
Nibbs R.J.B., Am. J. Pathol. 158:867-877(2001).



Western blot analysis of extracts from HepG2 cells, using CCBP2 antibody.



Western blot analysis of extracts from JurKat cells and 293 cells, using CCBP2 antibody.



Peptide - +

Immunofluorescence analysis of COS-7 cells, using CCBP2 antibody.

**For Research Use Only**