



Web: www.anbobio.com
www.dijibio.com
Order: order@dijibio.com
Tel: +86 519 8805 0026

EDG2 Antibody [#G083]

Catalog Number: G083

Concentration: 1mg/ml

Swiss-Prot No.: Q92633

Other Names: Lysophosphatidic acid receptor 1; LPA receptor 1; LPA-1; Lysophosphatidic acid receptor Edg-2; LPAR1; EDG2, LPA1

Storage/Stability: Store at -20°C/1 year

Form of Antibody: Rabbit IgG in phosphate buffered saline (without Mg²⁺ and Ca²⁺), pH 7.4, 150mM NaCl, 0.02% sodium azide and 50% glycerol.

Immunogen: The antiserum was produced against synthesized peptide derived from internal of human EDG2.

Purification: The antibody was affinity-purified from rabbit antiserum by affinity-chromatography using epitope-specific immunogen.

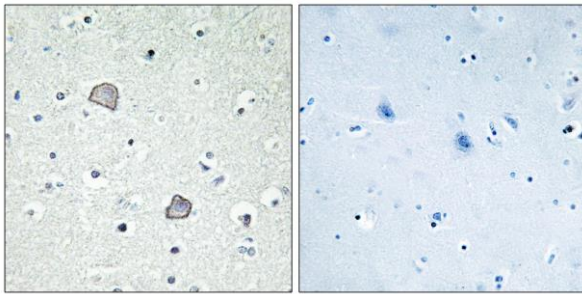
Specificity: EDG2 antibody detects endogenous levels of total EDG2 protein.

Reactivity: Human, Rat

Applications: WB: 1:500~1:3000 IHC: 1:50~1:100
IF: 1:100~1:500 ELISA: 1:1000

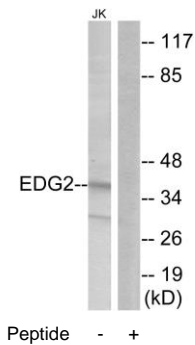
References:

An S., Biochem. Biophys. Res. Commun. 231:619-622(1997).
Moolenaar W.H., Curr. Opin. Cell Biol. 9:168-173(1997).
Contos J.J.A., Mol. Pharmacol. 58:1188-1196(2000).



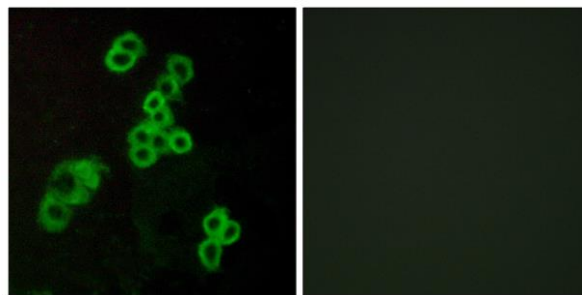
Peptide - +

Immunohistochemistry analysis of paraffin-embedded human brain tissue using EDG2 antibody.



Peptide - +

Western blot analysis of extracts from Jurkat cells, using EDG2 antibody.



Peptide - +

Immunofluorescence analysis of MCF-7 cells, using EDG2 antibody.