



Web: www.anbobio.com
www.dijibio.com
Order: order@dijibio.com
Tel: +86 519 8805 0026

EDG4 Antibody [#G085]

Catalog Number: G085

Concentration: 1mg/ml

Swiss-Prot No.: Q9HBW0

Other Names: EDG-4; endothelial differentiation, lysophosphatidic acid G-protein-coupled receptor, 4; G protein-coupled receptor; LPA receptor 2; LPA receptor EDG4; LPA-2; LPA2; LPAR2; lysophosphatidic acid receptor Edg-4; lysophosphatidic acid receptor EDG4

Storage/Stability: Store at -20°C/1 year

Form of Antibody: Rabbit IgG in phosphate buffered saline (without Mg²⁺ and Ca²⁺), pH 7.4, 150mM NaCl, 0.02% sodium azide and 50% glycerol.

Immunogen: The antiserum was produced against synthesized peptide derived from internal of human

EDG4.

Purification: The antibody was affinity-purified from rabbit antiserum by affinity-chromatography using epitope-specific immunogen.

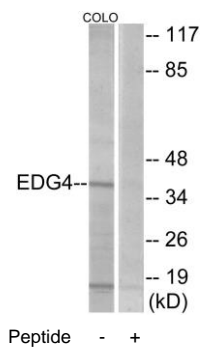
Specificity: EDG4 antibody detects endogenous levels of total EDG4 protein.

Reactivity: Human

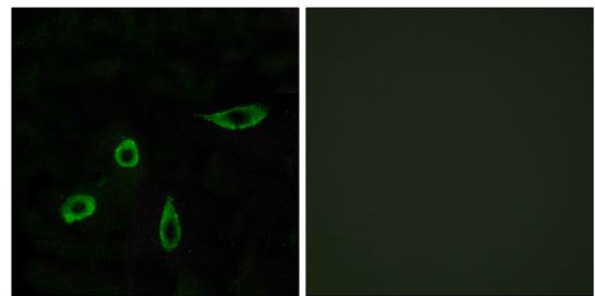
Applications: WB: 1:500~1:3000 IF: 1:100~1:500
ELISA: 1:10000

References:

An S., J. Biol. Chem. 273:7906-7910(1998).
Bandoh K., FEBS Lett. 478:159-165(2000).
Grimwood J., Nature 428:529-535(2004).



Western blot analysis of extracts from COLO205 cells, using EDG4 antibody.



Immunofluorescence analysis of LOVO cells, using EDG4 antibody.