



**Web:** [www.anbobio.com](http://www.anbobio.com)  
[www.dijibio.com](http://www.dijibio.com)  
**Order:** [order@dijibio.com](mailto:order@dijibio.com)  
**Tel:** +86 519 8805 0026

## EDG7 Antibody [#G088]

**Catalog Number:** G088

**Concentration:** 1mg/ml

**Swiss-Prot No.:** Q9UBY5

**Other Names:** Edg-7; endothelial differentiation, lysophosphatidic acid G-protein-coupled receptor, 7; GPCR; HOFNH30; LP-A3; LPA receptor 3; LPA-3; LPA3; LPAR3; lysophosphatidic acid receptor Edg-7; RP4-678I3

**Storage/Stability:** Store at -20°C/1 year

**Form of Antibody:** Rabbit IgG in phosphate buffered saline (without Mg<sup>2+</sup> and Ca<sup>2+</sup>), pH 7.4, 150mM NaCl, 0.02% sodium azide and 50% glycerol.

**Immunogen:** The antiserum was produced against synthesized peptide derived from internal of human

EDG7.

**Purification:** The antibody was affinity-purified from rabbit antiserum by affinity-chromatography using epitope-specific immunogen.

**Specificity:** EDG7 antibody detects endogenous levels of total EDG7 protein.

**Reactivity:** Human, Mouse, Rat

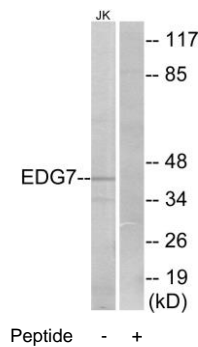
**Applications:** WB: 1:500~1:3000 IF: 1:100~1:500  
ELISA: 1:20000

**References:**

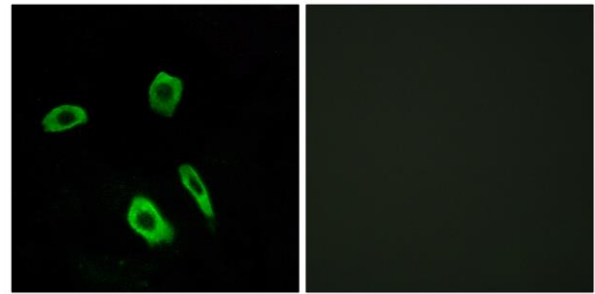
Bandoh K., J. Biol. Chem. 274:27776-27785(1999).

Im D.-S., Mol. Pharmacol. 57:753-759(2000).

Contos J.J.A., Mol. Pharmacol. 58:1188-1196(2000).



Western blot analysis of extracts from Jurkat cells, using EDG7 antibody.



Immunofluorescence analysis of LOVO cells, using EDG7 antibody.