



**Web:** [www.anbobio.com](http://www.anbobio.com)  
[www.dijibio.com](http://www.dijibio.com)  
**Order:** [order@dijibio.com](mailto:order@dijibio.com)  
**Tel:** +86 519 8805 0026

## PE2R3 Antibody [#G098]

**Catalog Number:** G098

**Concentration:** 1mg/ml

**Swiss-Prot No.:** P43115

**Other Names:** EP3; EP3-I; EP3-II; EP3-III; EP3-IV; EP3e; PE2R3; PGE receptor, EP3; PGE2-R; prostaglandin E2 receptor EP3

**Storage/Stability:** Store at -20°C/1 year

**Form of Antibody:** Rabbit IgG in phosphate buffered saline (without Mg<sup>2+</sup> and Ca<sup>2+</sup>), pH 7.4, 150mM NaCl, 0.02% sodium azide and 50% glycerol.

**Immunogen:** The antiserum was produced against synthesized peptide derived from internal of human PE2R3.

**Purification:** The antibody was affinity-purified from rabbit antiserum by affinity-chromatography using epitope-specific immunogen.

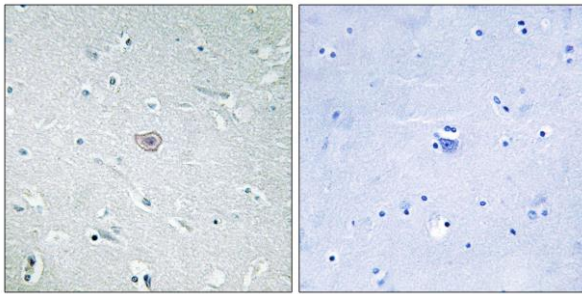
**Specificity:** PE2R3 antibody detects endogenous levels of total PE2R3 protein.

**Reactivity:** Human, Mouse, Rat

**Applications:** WB: 1:500~1:3000 IHC: 1:50~1:100  
IF: 1:100~1:500 ELISA: 1:5000

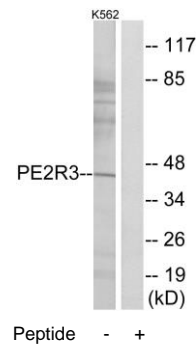
**References:**

Adam M., FEBS Lett. 338:170-174(1994).  
Schmid A., Eur. J. Biochem. 228:23-30(1995).  
Yang J., Biochem. Biophys. Res. Commun. 198:999-1006(1994).



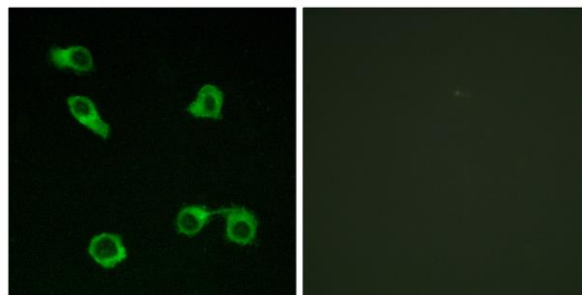
Peptide - +

Immunohistochemistry analysis of paraffin-embedded human brain tissue using PE2R3 antibody.



Peptide - +

Western blot analysis of extracts from K562 cells, using PE2R3 antibody.



Peptide - +

Immunofluorescence analysis of COS-7 cells, using PE2R3 antibody.