



**Web:** [www.anbobio.com](http://www.anbobio.com)  
[www.dijibio.com](http://www.dijibio.com)  
**Order:** [order@dijibio.com](mailto:order@dijibio.com)  
**Tel:** +86 519 8805 0026

## CRHR1 Antibody [#G072]

**Catalog Number:** G072

**Concentration:** 1mg/ml

**Swiss-Prot No.:** P34998

**Other Names:** Corticotropin releasing factor receptor 1 precursor; Corticotropin-releasing hormone receptor 1; CRF-R; CRF1; CRFR; CRFR1; CRH-R 1; CRHR; CRHR1

**Storage/Stability:** Store at -20°C/1 year

**Form of Antibody:** Rabbit IgG in phosphate buffered saline (without Mg<sup>2+</sup> and Ca<sup>2+</sup>), pH 7.4, 150mM NaCl, 0.02% sodium azide and 50% glycerol.

**Immunogen:** The antiserum was produced against synthesized peptide derived from internal of human CRHR1.

**Purification:** The antibody was affinity-purified from rabbit antiserum by affinity-chromatography using epitope-specific immunogen.

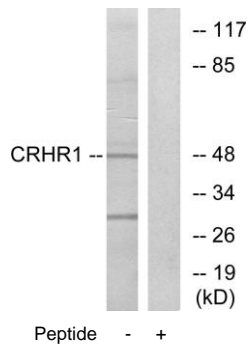
**Specificity:** CRHR1 antibody detects endogenous levels of total CRHR1 protein.

**Reactivity:** Human, Mouse, Rat

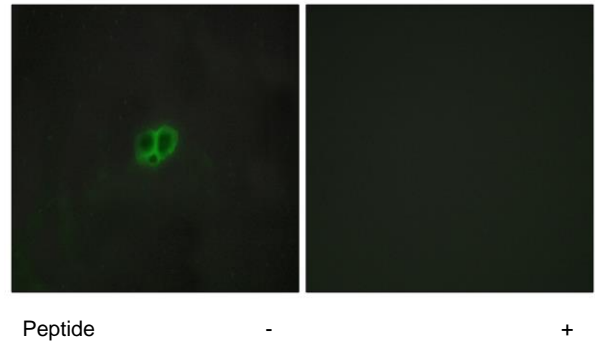
**Applications:** WB: 1:500~1:3000 IF: 1:100~1:500  
ELISA: 1:5000

**References:**

Chen R., Proc. Natl. Acad. Sci. U.S.A. 90:8967-8971(1993).  
Vita N., FEBS Lett. 335:1-5(1993).  
Sakai K., Gene 219:125-130(1998).



Western blot analysis of extracts from HT-29 cells, using CRHR1 antibody.



Immunofluorescence analysis of MCF-7 cells, using CRHR1 antibody.

**For Research Use Only**