



Web: www.anbobio.com
www.dijibio.com
Order: order@dijibio.com
Tel: +86 519 8805 0026

DRD4 Antibody [#G079]

Catalog Number: G076

Concentration: 1mg/ml

Swiss-Prot No.: P21917

Other Names: D(4) dopamine receptor; Dopamine D4 receptor; D(2C) dopamine receptor

Storage/Stability: Store at -20°C/1 year

Form of Antibody: Rabbit IgG in phosphate buffered saline (without Mg²⁺ and Ca²⁺), pH 7.4, 150mM NaCl, 0.02% sodium azide and 50% glycerol.

Immunogen: The antiserum was produced against synthesized peptide derived from internal of human DRD4.

Purification: The antibody was affinity-purified from rabbit antiserum by affinity-chromatography using epitope-specific immunogen.

Specificity: DRD4 antibody detects endogenous levels of total DRD4 protein.

Reactivity: Human, Mouse, Rat

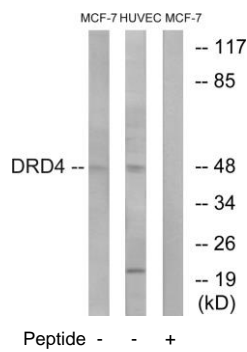
Applications: WB: 1:500~1:3000 IF: 1:100~1:500
ELISA: 1:40000

References:

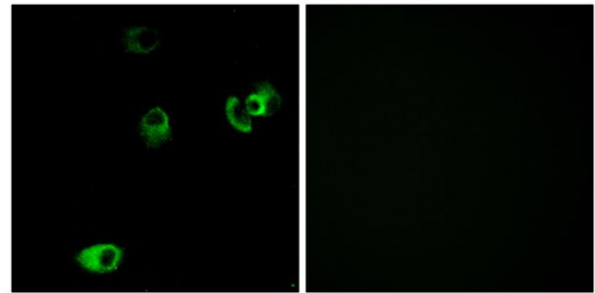
van Tol H.H., Nature 358:149-152(1992).

van Tol H.H.M., Nature 350:610-614(1991).

Lichter J.B., Hum. Mol. Genet. 2:767-773(1993).



Western blot analysis of extracts from MCF-7 cells and HUVEC cells, using DRD4 antibody.



Immunofluorescence analysis of MCF-7 cells, using DRD4 antibody.