



Web: www.anbobio.com
www.dijibio.com
Order: order@dijibio.com
Tel: +86 519 8805 0026

FPR1 Antibody [#G102]

Catalog Number: G102

Concentration: 1mg/ml

Swiss-Prot No.: P21462

Other Names: fMet-Leu-Phe receptor; fMLP receptor; formyl peptide receptor 1; FPR; N-formyl peptide receptor; N-formylpeptide chemoattractant receptor

Storage/Stability: Store at -20°C/1 year

Form of Antibody: Rabbit IgG in phosphate buffered saline (without Mg²⁺ and Ca²⁺), pH 7.4, 150mM NaCl, 0.02% sodium azide and 50% glycerol.

Immunogen: The antiserum was produced against synthesized peptide derived from internal of human FPR1.

Purification: The antibody was affinity-purified from rabbit antiserum by affinity-chromatography using epitope-specific immunogen.

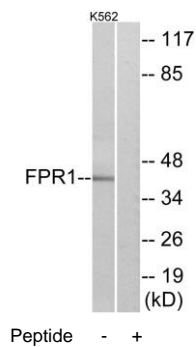
Specificity: FPR1 antibody detects endogenous levels of total FPR1 protein.

Reactivity: Human

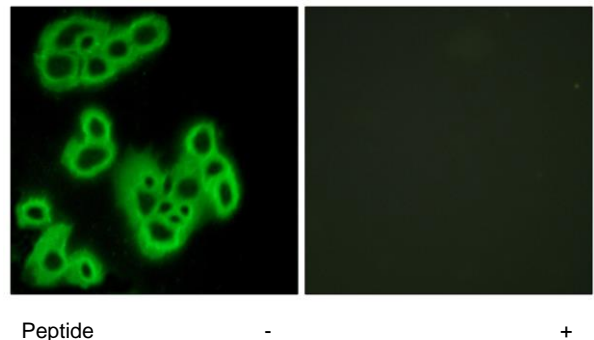
Applications: WB: 1:500~1:3000 IF: 1:100~1:500
ELISA: 1:1000

References:

Boulay F., Biochem. Biophys. Res. Commun. 168:1103-1109(1990).
Boulay F., Biochemistry 29:11123-11133(1990).
Murphy P.M., J. Biol. Chem. 266:12560-12567(1991).



Western blot analysis of extracts from K562 cells, using FPR1 antibody.



Immunofluorescence analysis of MCF-7 cells, using FPR1 antibody.