



Web: www.anbobio.com
www.dijibio.com
Order: order@dijibio.com
Tel: +86 519 8805 0026

FZD2 Antibody [#G107]

Catalog Number: G107

Concentration: 1mg/ml

Swiss-Prot No.: Q14332

Other Names: Frizzled-2 [Precursor]; Fz-2; hFz2; FzE2; FZD2

Storage/Stability: Store at -20°C/1 year

Form of Antibody: Rabbit IgG in phosphate buffered saline (without Mg²⁺ and Ca²⁺), pH 7.4, 150mM NaCl, 0.02% sodium azide and 50% glycerol.

Immunogen: The antiserum was produced against synthesized peptide derived from internal of human FZD2.

Purification: The antibody was affinity-purified from rabbit antiserum by affinity-chromatography using

epitope-specific immunogen.

Specificity: FZD2 antibody detects endogenous levels of total FZD2 protein.

Reactivity: Human, Mouse, Rat

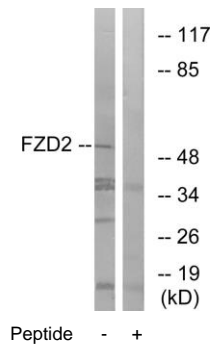
Applications: WB: 1:500~1:3000 IF: 1:100~1:500
ELISA: 1:40000

References:

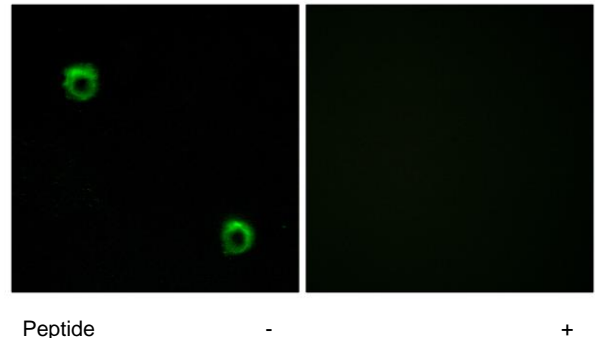
Zhao Z., Genomics 27:370-373(1995).

Sagara N., Biochem. Biophys. Res. Commun. 252:117-122(1998).

The MGC Project Team; Genome Res. 14:2121-2127(2004).



Western blot analysis of extracts from HeLa cells, using FZD2 antibody.



Immunofluorescence analysis of MCF-7 cells, using FZD2 antibody.