



Web: [www.anbobio.com](http://www.anbobio.com)  
[www.dijibio.com](http://www.dijibio.com)  
Order: [order@dijibio.com](mailto:order@dijibio.com)  
Tel: (86) 519 8805 0026

## RBM5 Antibody [#C10706]

**Catalog Number:** C10706

**Concentration:** 1mg/ml

**Swiss-Prot No.:** P52756

**Other Names:** G15, H37, LUCA15, RMB5, RNA binding motif protein 5

**Storage/Stability:** Store at -20°C/1 year

**Form of Antibody:** Rabbit IgG in phosphate buffered saline (without Mg<sup>2+</sup> and Ca<sup>2+</sup>), pH 7.4, 150mM NaCl, 0.02% sodium azide and 50% glycerol.

**Immunogen:** The antiserum was produced against synthesized peptide derived from internal of human RBM5.

**Purification:** The antibody was affinity-purified from rabbit antiserum by affinity-chromatography using epitope-specific immunogen.

**Specificity:** RBM5 antibody detects endogenous levels of total RBM5 protein.

**Reactivity:** Human, Mouse

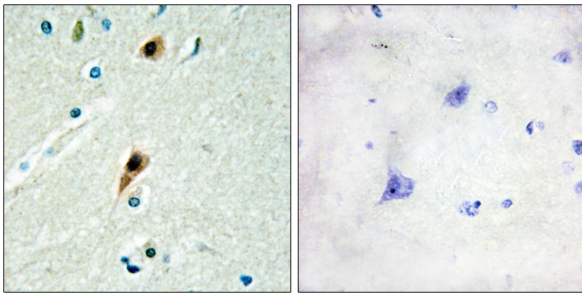
**Applications:** WB: 1:500~1:3000 ELISA: 1:10000

**References:**

Bader S., Submitted (APR-1996) to the EMBL/GenBank/DDBJ databases.

Timmer T., Genomics 60:238-240(1999).

Oh J.J., Nucleic Acids Res. 27:4008-4017(1999).

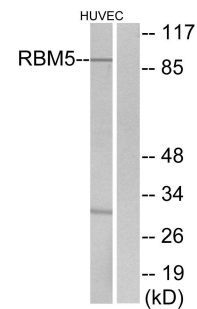


Peptide

-

+

Immunohistochemistry analysis of paraffin-embedded human brain tissue using RBM5 antibody.



Peptide

-

+

Western blot analysis of extracts from HUVEC cells, using RBM5 antibody.