



**Web:** [www.anbobio.com](http://www.anbobio.com)  
[www.dijibio.com](http://www.dijibio.com)  
**Order:** [order@dijibio.com](mailto:order@dijibio.com)  
**Tel:** (86) 519 8805 0026

## CEBPG Antibody [#C10718]

**Catalog Number:** C10718

**Concentration:** 1mg/ml

**Swiss-Prot No.:** P53567

**Other Names:** CCAAT/enhancer-binding protein gamma, C/EBP gamma, CEBPG

**Storage/Stability:** Store at -20°C/1 year

**Form of Antibody:** Rabbit IgG in phosphate buffered saline (without Mg<sup>2+</sup> and Ca<sup>2+</sup>), pH 7.4, 150mM NaCl, 0.02% sodium azide and 50% glycerol.

**Immunogen:** The antiserum was produced against synthesized peptide derived from internal of human CEBPG.

**Purification:** The antibody was affinity-purified from

rabbit antiserum by affinity-chromatography using epitope-specific immunogen.

**Specificity:** CEBPG antibody detects endogenous levels of total CEBPG protein.

**Reactivity:** Human, Mouse, Rat

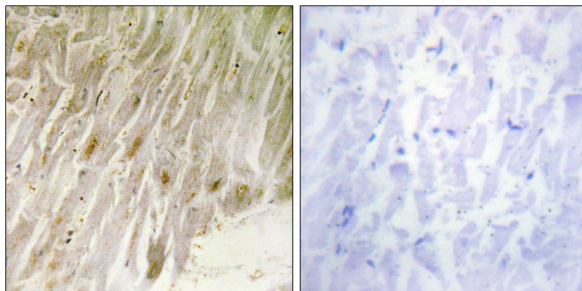
**Applications:** WB: 1:500~1:3000 IHC: 1:50~1:100  
ELISA: 1:20000

**References:**

Davydov I.V., Gene 161:271-275(1995).

Kalnina N., Submitted (MAY-2003) to the EMBL/GenBank/DDBJ databases.

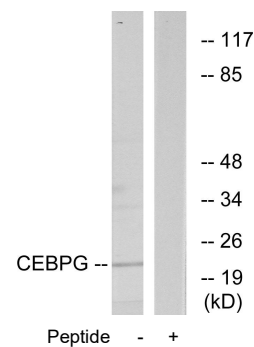
The MGC Project Team, Genome Res. 14:2121-2127(2004).



Peptide -

+

Immunohistochemistry analysis of paraffin-embedded human heart tissue using CEBPG antibody.



CEBPG --

Peptide - +

Western blot analysis of extracts from RAW264.7 cells, using CEBPG antibody.