



Web: www.anbobio.com
www.dijibio.com
Order: order@dijibio.com
Tel: (86) 519 8805 0026

LIMK2 Antibody [#C10720]

Catalog Number: C10720

Concentration: 1mg/ml

Swiss-Prot No.: P53671

Other Names: EC 2.7.11.1, LIM domain kinase 2, LIMK-2, kinase LIMK2

Storage/Stability: Store at -20°C/1 year

Form of Antibody: Rabbit IgG in phosphate buffered saline (without Mg²⁺ and Ca²⁺), pH 7.4, 150mM NaCl, 0.02% sodium azide and 50% glycerol.

Immunogen: The antiserum was produced against synthesized peptide derived from internal of human LIMK2.

Purification: The antibody was affinity-purified from

rabbit antiserum by affinity-chromatography using epitope-specific immunogen.

Specificity: LIMK2 antibody detects endogenous levels of total LIMK2 protein.

Reactivity: Human, Mouse, Rat

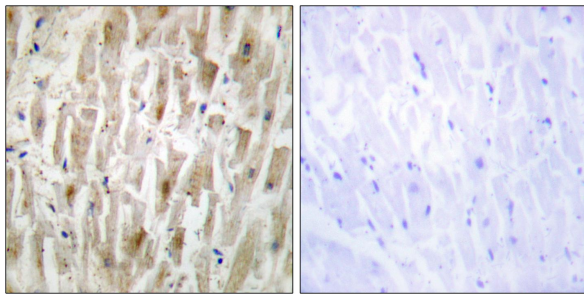
Applications: WB: 1:500~1:3000 IHC: 1:50~1:100
IF: 1:100~1:500 ELISA: 1:40000

References:

Okano I., J. Biol. Chem. 270:31321-31330(1995).

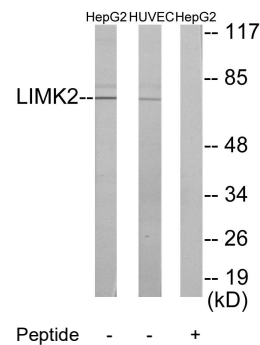
Osada H., Biochem. Biophys. Res. Commun. 229:582-589(1996).

Collins J.E., Genome Biol. 5:RESEARCH84.1-RESEARCH84.11(2004).

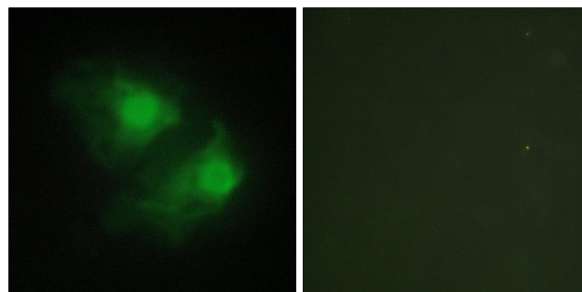


Peptide - +

Immunohistochemistry analysis of paraffin-embedded human heart tissue using LIMK2 antibody.



Western blot analysis of extracts from HepG2 cells and HUVEC cells, using LIMK2 antibody.



Peptide - +

Immunofluorescence analysis of HeLa cells, using LIMK2 antibody.