



Web: [www.anbobio.com](http://www.anbobio.com)  
[www.dijibio.com](http://www.dijibio.com)  
Order: [order@dijibio.com](mailto:order@dijibio.com)  
Tel: (86) 519 8805 0026

## TPD52 Antibody [#C10745]

**Catalog Number:** C10745

**Concentration:** 1mg/ml

**Swiss-Prot No.:** P55327

**Other Names:** D52, N8 protein, N8L, PC-1, PrLZ, hD52, prostate and colon associated protein, tumor protein D52

**Storage/Stability:** Store at -20°C/1 year

**Form of Antibody:** Rabbit IgG in phosphate buffered saline (without Mg<sup>2+</sup> and Ca<sup>2+</sup>), pH 7.4, 150mM NaCl, 0.02% sodium azide and 50% glycerol.

**Immunogen:** The antiserum was produced against synthesized peptide derived from internal of human TPD52.

**Purification:** The antibody was affinity-purified from

rabbit antiserum by affinity-chromatography using epitope-specific immunogen.

**Specificity:** TPD52 antibody detects endogenous levels of total TPD52 protein.

**Reactivity:** Human (Identities = 100%, Positives = 100%);  
Mouse (Identities = 100%, Positives = 100%)

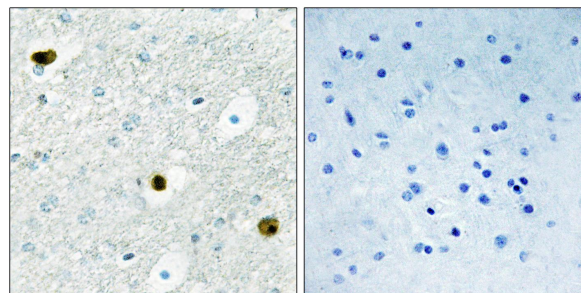
**Applications:** IHC: 1:50~1:100 ELISA: 1:40000

**References:**

Byrne J.A., Cancer Res. 55:2896-2903(1995).

Olsen J.V., Cell 127:635-648(2006).

Molina H., Proc. Natl. Acad. Sci. U.S.A. 104:2199-2204(2007).



Peptide

-

+

Immunohistochemistry analysis of paraffin-embedded human brain tissue, using TPD52 antibody.