



Web: www.anbobio.com
www.dijibio.com
Order: order@dijibio.com
Tel: (86) 519 8805 0026

CKS1 Antibody [#C10766]

Catalog Number: C10766

Concentration: 1mg/ml

Swiss-Prot No.: P61024

Other Names: CKS-1, CKS1B, cyclin-dependent kinases regulatory subunit 1

Storage/Stability: Store at -20°C/1 year

Form of Antibody: Rabbit IgG in phosphate buffered saline (without Mg²⁺ and Ca²⁺), pH 7.4, 150mM NaCl, 0.02% sodium azide and 50% glycerol.

Immunogen: The antiserum was produced against synthesized peptide derived from N-terminal of human CKS1.

Purification: The antibody was affinity-purified from

rabbit antiserum by affinity-chromatography using epitope-specific immunogen.

Specificity: CKS1 antibody detects endogenous levels of total CKS1 protein.

Reactivity: Human, Mouse

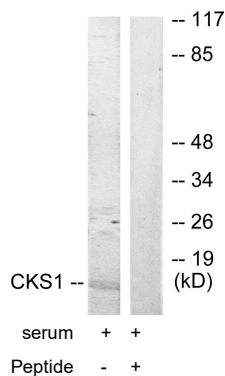
Applications: WB: 1:500~1:3000 IF: 1:100~1:500
ELISA: 1:20000

References:

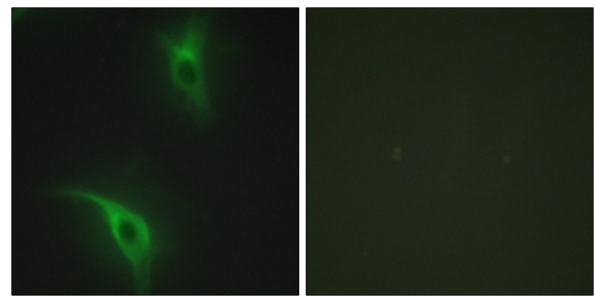
Richardson H.E., Genes Dev. 4:1332-1344(1990).

The MGC Project Team, Genome Res. 14:2121-2127(2004).

Arvai A.S., J. Mol. Biol. 249:835-842(1995).



Western blot analysis of extracts from Jurkat cells, treated with serum (20%, 15mins), using CKS1 antibody.



Immunofluorescence analysis of HeLa cells, using CKS1 antibody.