



Web: www.anbobio.com
www.dijibio.com
Order: order@dijibio.com
Tel: (86) 519 8805 0026

IPKA Antibody [#C10772]

Catalog Number: C10772

Concentration: 1mg/ml

Swiss-Prot No.: P61925

Other Names: IPKA, OKRBCI, PKI-alpha, PRKACN1, cAMP-dependent protein kinase inhibitor alpha, cAMP-dependent protein kinase inhibitor, muscle/brain isoform

Storage/Stability: Store at -20°C/1 year

Form of Antibody: Rabbit IgG in phosphate buffered saline (without Mg²⁺ and Ca²⁺), pH 7.4, 150mM NaCl, 0.02% sodium azide and 50% glycerol.

Immunogen: The antiserum was produced against synthesized peptide derived from internal of human IPKA.

Purification: The antibody was affinity-purified from rabbit antiserum by affinity-chromatography using

epitope-specific immunogen.

Specificity: IPKA antibody detects endogenous levels of total IPKA protein.

Reactivity: Human (Identities = 100%, Positives = 100%);
Mouse (Identities = 100%, Positives = 100%);
Rat (Identities = 100%, Positives = 100%)

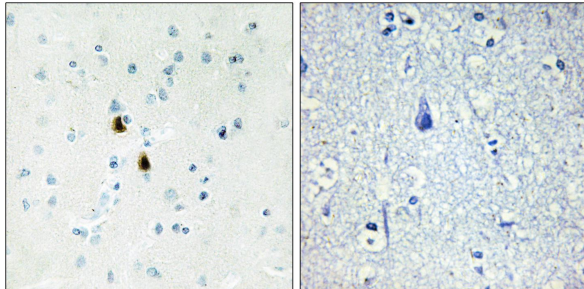
Applications: IHC: 1:50~1:100 IF: 1:100~1:500
ELISA: 1:20000

References:

Olsen S.R., Mol. Endocrinol. 5:1246-1256(1991).

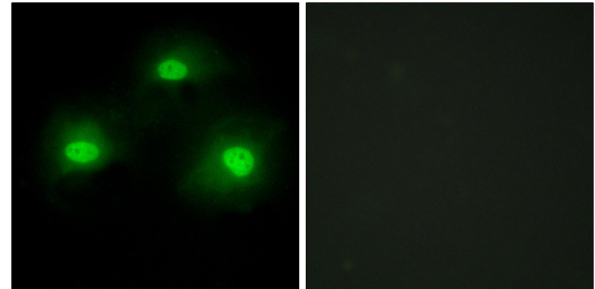
Knoell R., Submitted (FEB-2000) to the EMBL/GenBank/DDBJ databases.

The MGC Project Team, Genome Res. 14:2121-2127(2004).



Peptide - +

Immunohistochemistry analysis of paraffin-embedded human brain tissue, using TPD52 antibody.



Peptide - +

Immunofluorescence analysis of HeLa cells, using TPD52 antibody.