



Web: www.anbobio.com
www.dijibio.com
Order: order@dijibio.com
Tel: (86) 519 8805 0026

SFRS3 Antibody [#C10809]

Catalog Number: C10809

Concentration: 1mg/ml

Swiss-Prot No.: P84103

Other Names: Splicing factor, arginine/serine-rich 3, Pre-mRNA-splicing factor SRP20, SFRS3, SRP20

Storage/Stability: Store at -20°C/1 year

Form of Antibody: Rabbit IgG in phosphate buffered saline (without Mg²⁺ and Ca²⁺), pH 7.4, 150mM NaCl, 0.02% sodium azide and 50% glycerol.

Immunogen: The antiserum was produced against synthesized peptide derived from internal of human SFRS3.

Purification: The antibody was affinity-purified from rabbit antiserum by affinity-chromatography using epitope-specific immunogen.

Specificity: SFRS3 antibody detects endogenous levels of total SFRS3 protein.

Reactivity: Human, Mouse

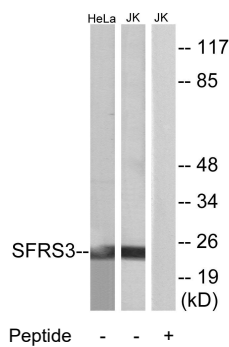
Applications: WB: 1:500~1:3000 IF: 1:100~1:500
ELISA: 1:5000

References:

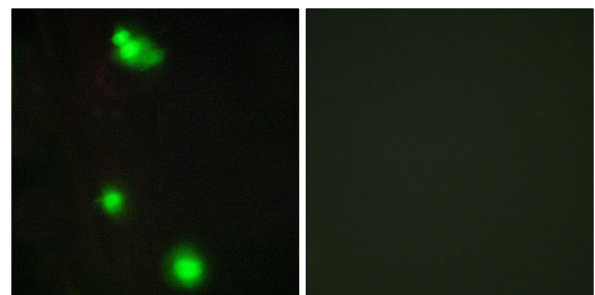
Zahler A.M., Genes Dev. 6:837-847(1992).

Mungall A.J., Nature 425:805-811(2003).

Barnard D.C., Mol. Cell. Biol. 20:3049-3057(2000).



Western blot analysis of extracts from HeLa cells and Jurkat cells, using SFRS3 antibody.



Immunofluorescence analysis of MCF-7 cells, using SFRS3 antibody.