



Web: www.anbobio.com
www.dijibio.com
Order: order@dijibio.com
Tel: (86) 519 8805 0026

TFAM Antibody [#C10817]

Catalog Number: C10817

Concentration: 1mg/ml

Swiss-Prot No.: Q00059

Other Names: RTEF1, TCF13L1, TEA domain family member 4, TEAD-4, TEAD4, TEF3, transcription factor RTEF-1, transcriptional enhancer factor TEF-3;

Storage/Stability: Store at -20°C/1 year

Form of Antibody: Rabbit IgG in phosphate buffered saline (without Mg²⁺ and Ca²⁺), pH 7.4, 150mM NaCl, 0.02% sodium azide and 50% glycerol.

Immunogen: The antiserum was produced against synthesized peptide derived from internal of human TFAM.

Purification: The antibody was affinity-purified from

rabbit antiserum by affinity-chromatography using epitope-specific immunogen.

Specificity: TFAM antibody detects endogenous levels of total TFAM protein.

Reactivity: Human (Identities = 100%, Positives = 100%)

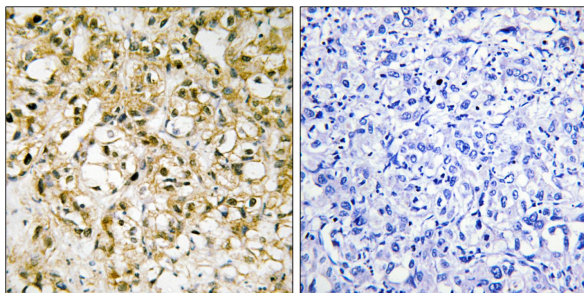
Applications: IHC: 1:50~1:100 IF: 1:100~1:500
ELISA: 1:40000

References:

Parisi M.A., Science 252:965-969(1991).

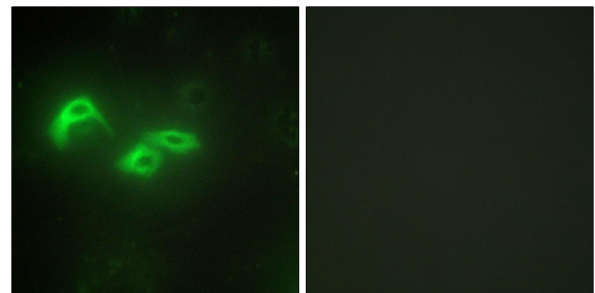
Tominaga K., Biochim. Biophys. Acta 1131:217-219(1992).

Fisher R.P., J. Biol. Chem. 267:3358-3367(1992).



Peptide - +

Immunohistochemistry analysis of paraffin-embedded human liver carcinoma tissue, using TFAM antibody.



Peptide - +

Immunofluorescence analysis of HepG2 cells, using TFAM antibody.

For Research Use Only