



Web: www.anbobio.com
www.dijibio.com
Order: order@dijibio.com
Tel: (86) 519 8805 0026

MAP3K10 Antibody [#C10857]

Catalog Number: C10857

Concentration: 1mg/ml

Swiss-Prot No.: Q02779

Other Names: EC 2.7.11.25; Mixed lineage kinase 2;
Protein kinase MST

Storage/Stability: Store at -20°C/1 year

Form of Antibody: Rabbit IgG in phosphate buffered saline (without Mg²⁺ and Ca²⁺), pH 7.4, 150mM NaCl, 0.02% sodium azide and 50% glycerol.

Immunogen: The antiserum was produced against synthesized peptide derived from internal of human MAP3K10.

Purification: The antibody was affinity-purified from rabbit antiserum by affinity-chromatography using epitope-specific immunogen.

Specificity: MAP3K10 antibody detects endogenous levels of total MAP3K10 protein.

Reactivity: Human (Identities = 100%, Positives = 100%);
Mouse (Identities = 100%, Positives = 100%)

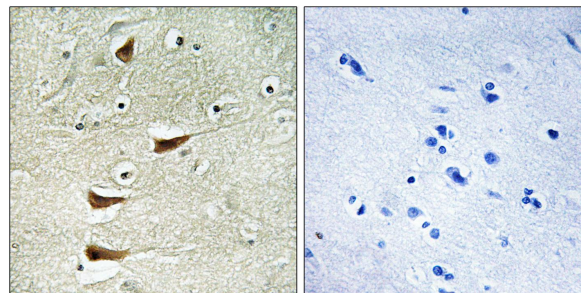
Applications: IHC: 1:50~1:100 ELISA: 1:20000

References:

Dorow D.S., Eur. J. Biochem. 234:492-500(1995).

Katoh M., Oncogene 10:1447-1451(1995).

Dorow D.S., Eur. J. Biochem. 213:701-710(1993).



Peptide - +

Immunohistochemistry analysis of paraffin-embedded human brain tissue, using MAP3K10 antibody.