



**Web:** [www.anbobio.com](http://www.anbobio.com)  
[www.dijibio.com](http://www.dijibio.com)  
**Order:** [order@dijibio.com](mailto:order@dijibio.com)  
**Tel:** (86) 519 8805 0026

## Mevalonate Kinase Antibody [#C10868]

**Catalog Number:** C10868

**Concentration:** 1mg/ml

**Swiss-Prot No.:** Q03426

**Other Names:** Mevalonate kinase, EC 2.7.1.36, MK, MVK

**Storage/Stability:** Store at -20°C/1 year

**Form of Antibody:** Rabbit IgG in phosphate buffered saline (without Mg<sup>2+</sup> and Ca<sup>2+</sup>), pH 7.4, 150mM NaCl, 0.02% sodium azide and 50% glycerol.

**Immunogen:** The antiserum was produced against synthesized peptide derived from internal of human Mevalonate Kinase.

**Purification:** The antibody was affinity-purified from rabbit antiserum by affinity-chromatography using epitope-specific immunogen.

**Specificity:** Mevalonate Kinase antibody detects endogenous levels of total Mevalonate Kinase protein.

**Reactivity:** Human

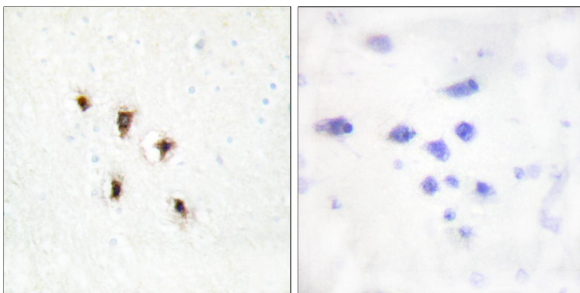
**Applications:** WB: 1:500~1:3000 IHC: 1:50~1:100  
ELISA: 1:10000

**References:**

Schafer B.L., J. Biol. Chem. 267:13229-13238(1992).

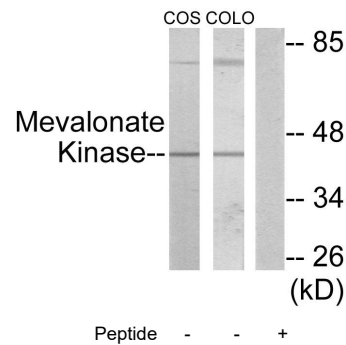
Graef E., Oncogene 9:81-87(1994).

Houten S.M., Eur. J. Hum. Genet. 9:253-259(2001).



Peptide - +

Immunohistochemistry analysis of paraffin-embedded human brain tissue using Mevalonate Kinase antibody.



Western blot analysis of extracts from COS-7 cells and COLO205 cells, using Mevalonate Kinase antibody.