



Web: www.anbobio.com
www.dijibio.com
Order: order@dijibio.com
Tel: (86) 519 8805 0026

MtSSB Antibody [#C10880]

Catalog Number: C10880

Concentration: 1mg/ml

Swiss-Prot No.: Q04837

Other Names: Mt-SSB, MtSSB, PWP1-interacting protein 17, SSB, SSBP, single-stranded DNA-binding protein, mitochondrial

Storage/Stability: Store at -20°C/1 year

Form of Antibody: Rabbit IgG in phosphate buffered saline (without Mg²⁺ and Ca²⁺), pH 7.4, 150mM NaCl, 0.02% sodium azide and 50% glycerol.

Immunogen: The antiserum was produced against synthesized peptide derived from internal of human MtSSB.

Purification: The antibody was affinity-purified from rabbit antiserum by affinity-chromatography using epitope-specific immunogen.

Specificity: MtSSB antibody detects endogenous levels of total MtSSB protein.

Reactivity: Human, Mouse, Rat

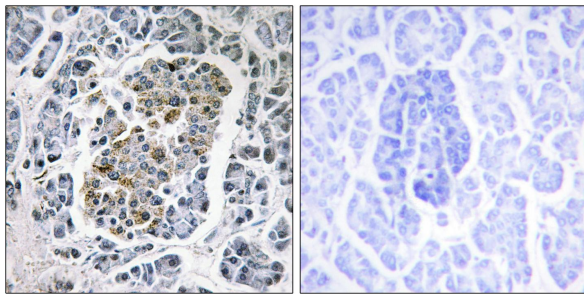
Applications: WB: 1:500~1:3000 IHC: 1:50~1:100
IF: 1:100~1:500 ELISA: 1:1000

References:

Tiranti V., Gene 126:219-225(1993).

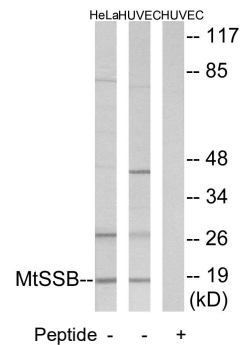
Matsuoka S., Science 316:1160-1166(2007).

Yang C., Nat. Struct. Biol. 4:153-157(1997).

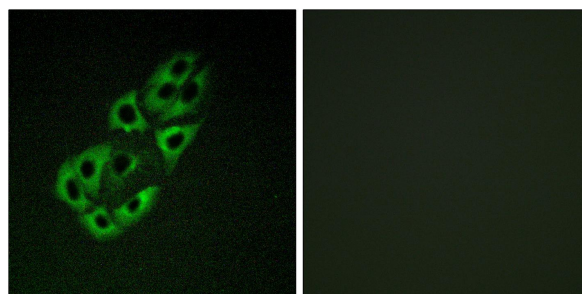


Peptide - +

Immunohistochemistry analysis of paraffin-embedded human pancreas tissue using MtSSB antibody.



Western blot analysis of extracts from HeLa cells and HUVEC cells, using MtSSB antibody.



Peptide - +

Immunofluorescence analysis of A549 cells, using MtSSB antibody.