



**Web:** [www.anbobio.com](http://www.anbobio.com)

[www.dijibio.com](http://www.dijibio.com)

**Order:** [order@dijibio.com](mailto:order@dijibio.com)

**Tel:** (86) 519 8805 0026

## SMF Antibody [#C10917]

**Catalog Number:** C10917

**Concentration:** 1mg/ml

**Swiss-Prot No.:** Q12766

**Other Names:** Protein SMF, SMF, KIAA0194

**Storage/Stability:** Store at -20°C/1 year

**Form of Antibody:** Rabbit IgG in phosphate buffered saline (without Mg<sup>2+</sup> and Ca<sup>2+</sup>), pH 7.4, 150mM NaCl, 0.02% sodium azide and 50% glycerol.

**Immunogen:** The antiserum was produced against synthesized peptide derived from internal of human SMF.

**Purification:** The antibody was affinity-purified from

rabbit antiserum by affinity-chromatography using epitope-specific immunogen.

**Specificity:** SMF antibody detects endogenous levels of total SMF protein.

**Reactivity:** Human (Identities = 100%, Positives = 100%)

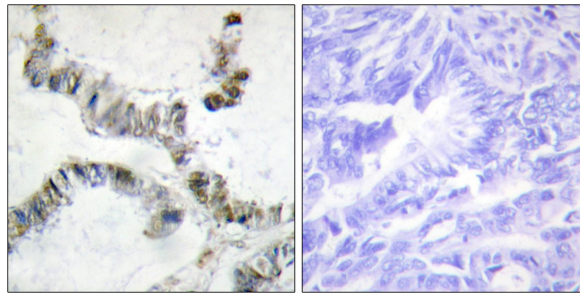
**Applications:** IHC: 1:50~1:100 ELISA: 1:20000

**References:**

Schmutz J., Nature 431:268-274(2004).

Nagase T., DNA Res. 3:17-24(1996).

Andre C., Genomics 39:216-226(1997).



Peptide

-

+

Immunohistochemistry analysis of paraffin-embedded human colon carcinoma tissue, using SMF antibody.