



Web: www.anbobio.com
www.dijibio.com
Order: order@dijibio.com
Tel: (86) 519 8805 0026

KLF10/11 Antibody [#C10948]

Catalog Number: C10948

Concentration: 1mg/ml

Swiss-Prot No.: Q13118/O14901

Other Names: Krueppel-like factor 10, Transforming growth factor-beta-inducible early growth response protein 1, TGFB-inducible early growth response protein 1, TIEG-1, EGR-alpha, TIEG, TIEG1

Storage/Stability: Store at -20°C/1 year

Form of Antibody: Rabbit IgG in phosphate buffered saline (without Mg²⁺ and Ca²⁺), pH 7.4, 150mM NaCl, 0.02% sodium azide and 50% glycerol.

Immunogen: The antiserum was produced against synthesized peptide derived from internal of human KLF10/11.

Purification: The antibody was affinity-purified from rabbit antiserum by affinity-chromatography using epitope-specific immunogen.

Specificity: KLF10/11 antibody detects endogenous levels of total KLF10/11 protein.

Reactivity: Human (Identities = 100%, Positives = 100%);
Mouse (Identities = 100%, Positives = 100%);
Rat (Identities = 100%, Positives = 100%)

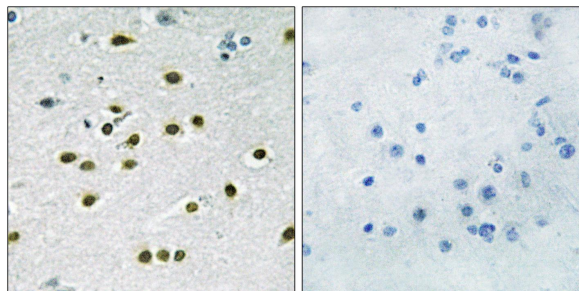
Applications: IHC: 1:50~1:100 ELISA: 1:5000

References:

Subramaniam M., Nucleic Acids Res. 23:4907-4912(1995).

Fautsch M.P., Genomics 51:408-416(1998).

Johnsen S.A., J. Biol. Chem. 277:30754-30759(2002).



Peptide

-

+

Immunohistochemistry analysis of paraffin-embedded human brain tissue, using KLF10/11 antibody.